

# COMUNE DI ROMA

COMPLESSO IMMOBILIARE IN ZONA M2  
VIA AURELIA 796 - ROMA

## PIAZZA PUBBLICA

VIA AURELIA-VIA DEI FAGGELLA

PROGETTO - STATO FINALE

PROPRIETA':

Societa' Immobiliare Aurelia Sostentamento S.p.a

Via Aurelia N.796, 00165 ROMA

C.F. 02513080586

P.I. 01068301009

PROGETTISTA:

Dott. Arch. Giovanni Testa

Via Lorenzo Rocci 67, 00151 ROMA

C.F. TSTGNN48D20H501C

P.I. 02108110582

DIREZIONE LAVORI:

Studio Pallotta Ass. Professionale

Dott. Ing. Gianni Pallotta

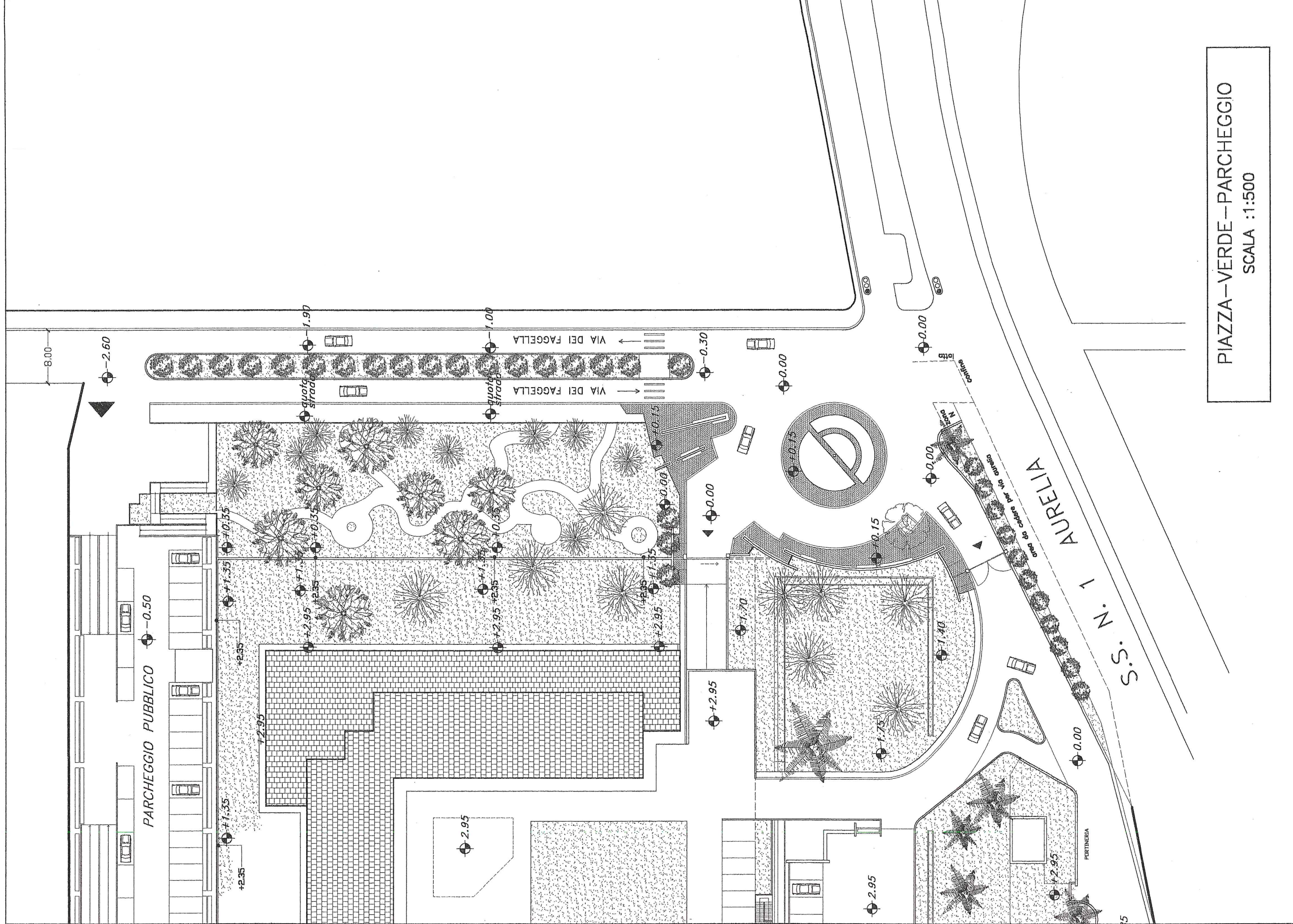
Viale delle Milizie, 22 - ROMA

C.F. 058621705585

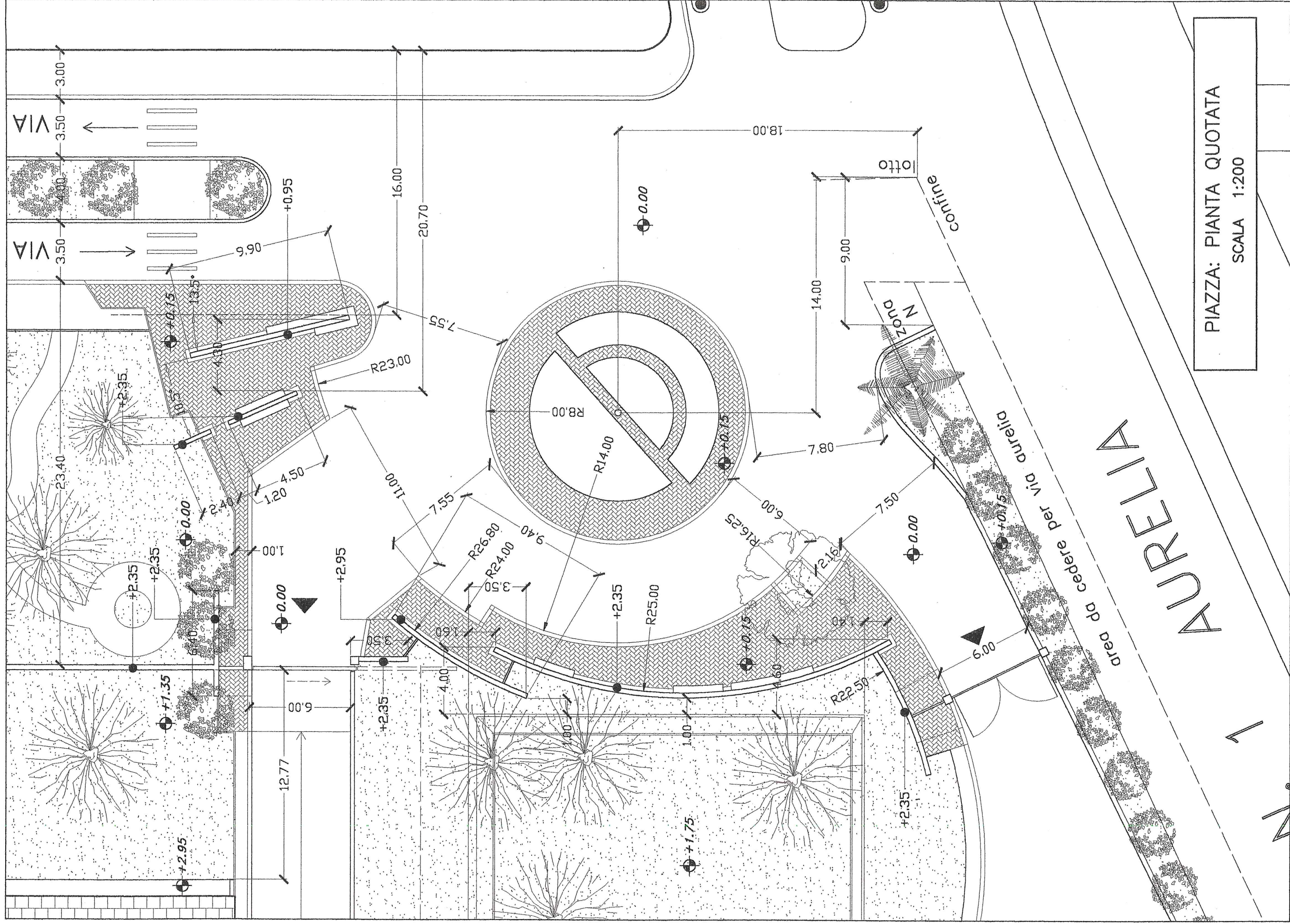
P.I. 01457891006

Data: Gennaio 2000

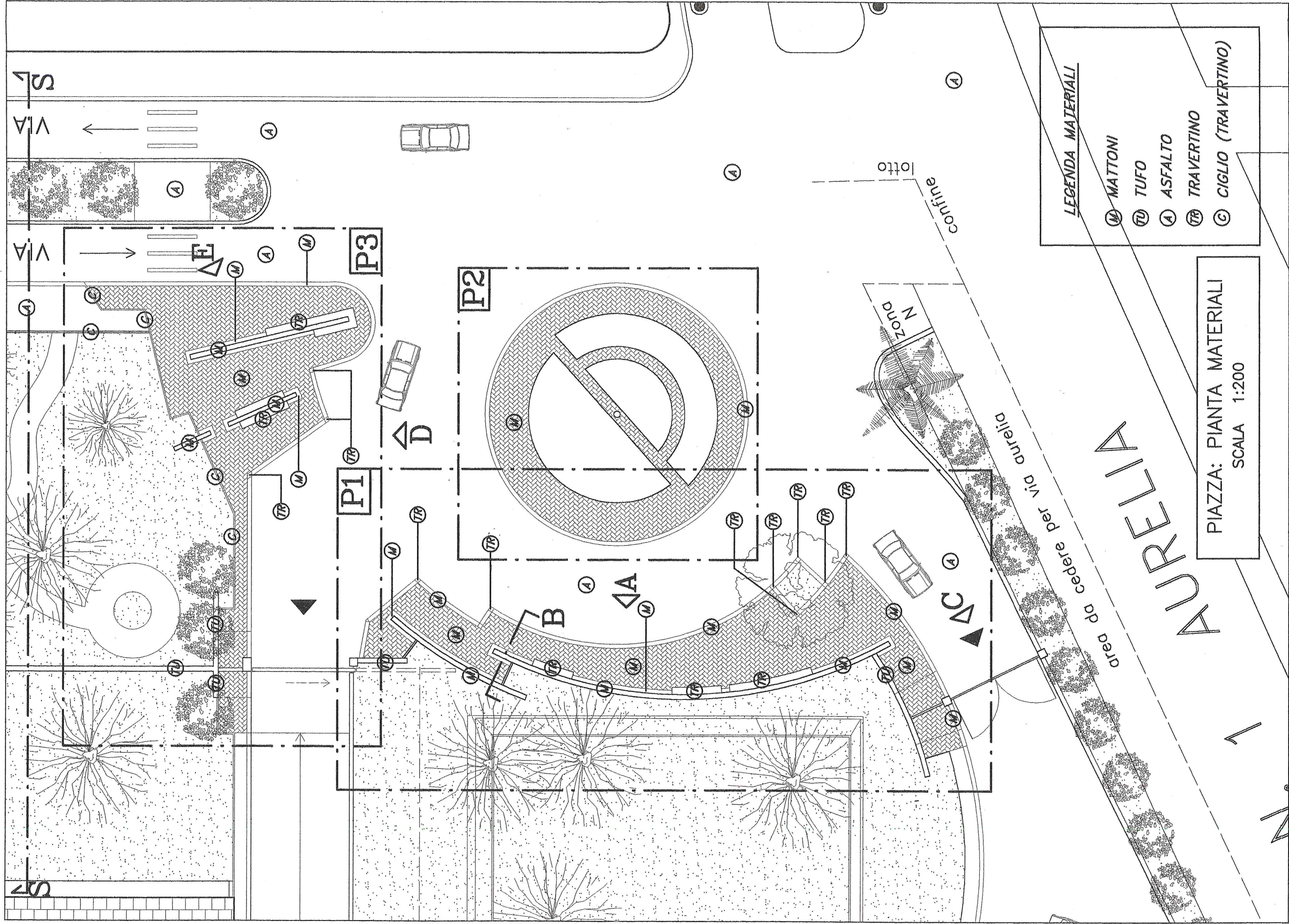
Scale: VARIE



PIAZZA-VERDE - PARCHEGGIO  
 SCALA : 1:500



PIAZZA: PIANTA QUOTATA  
 SCALA 1:200



**LEGENDA MATERIALI**

(M)	MATTONI
(TU)	TUFO
(A)	ASFALTO
(TR)	TRAVERTINO
(C)	CIGLIO (TRAVERTINO)

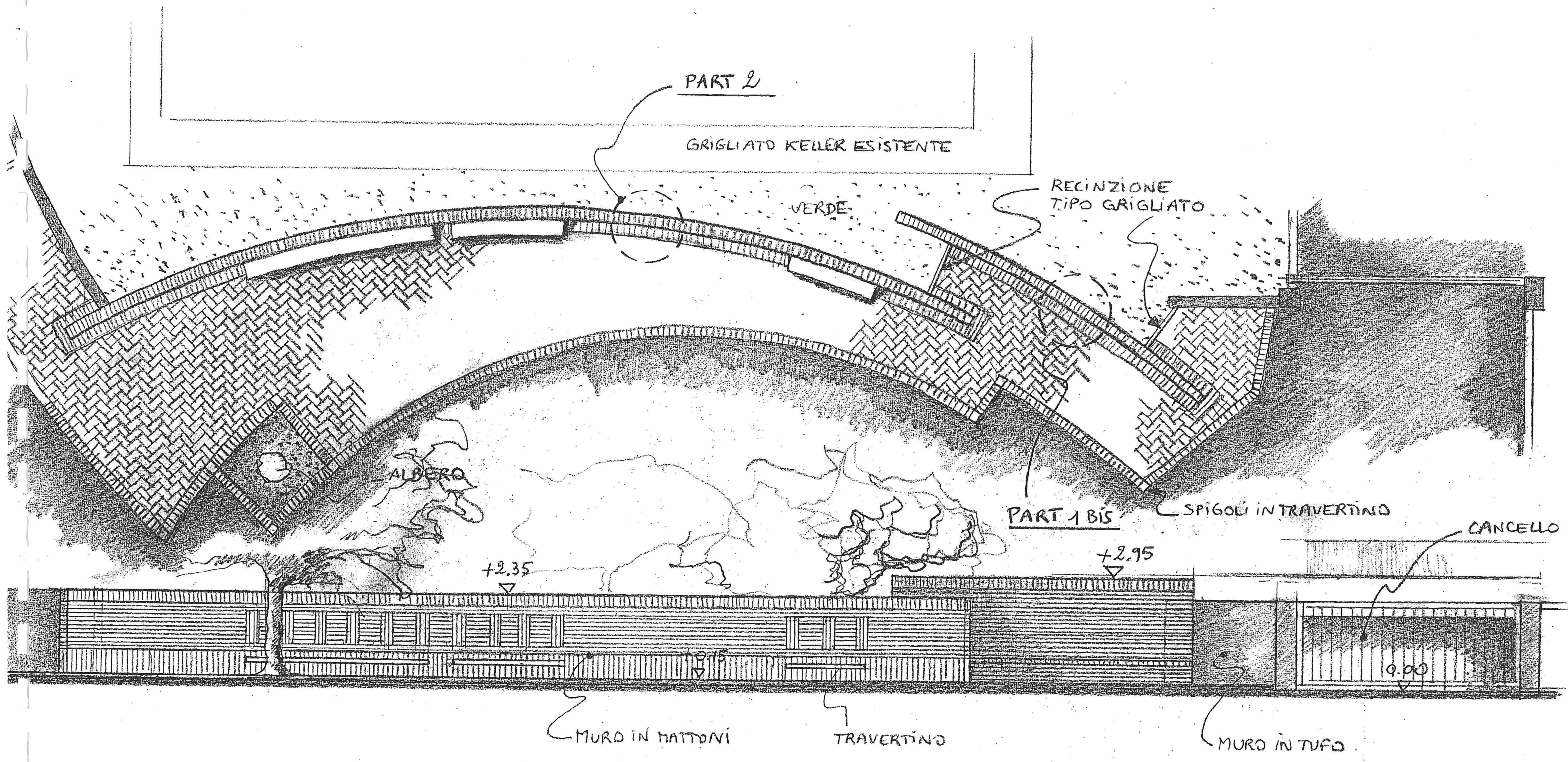
PIAZZA: PIANTE MATERIALI  
 SCALA 1:200

VIA AURELIA

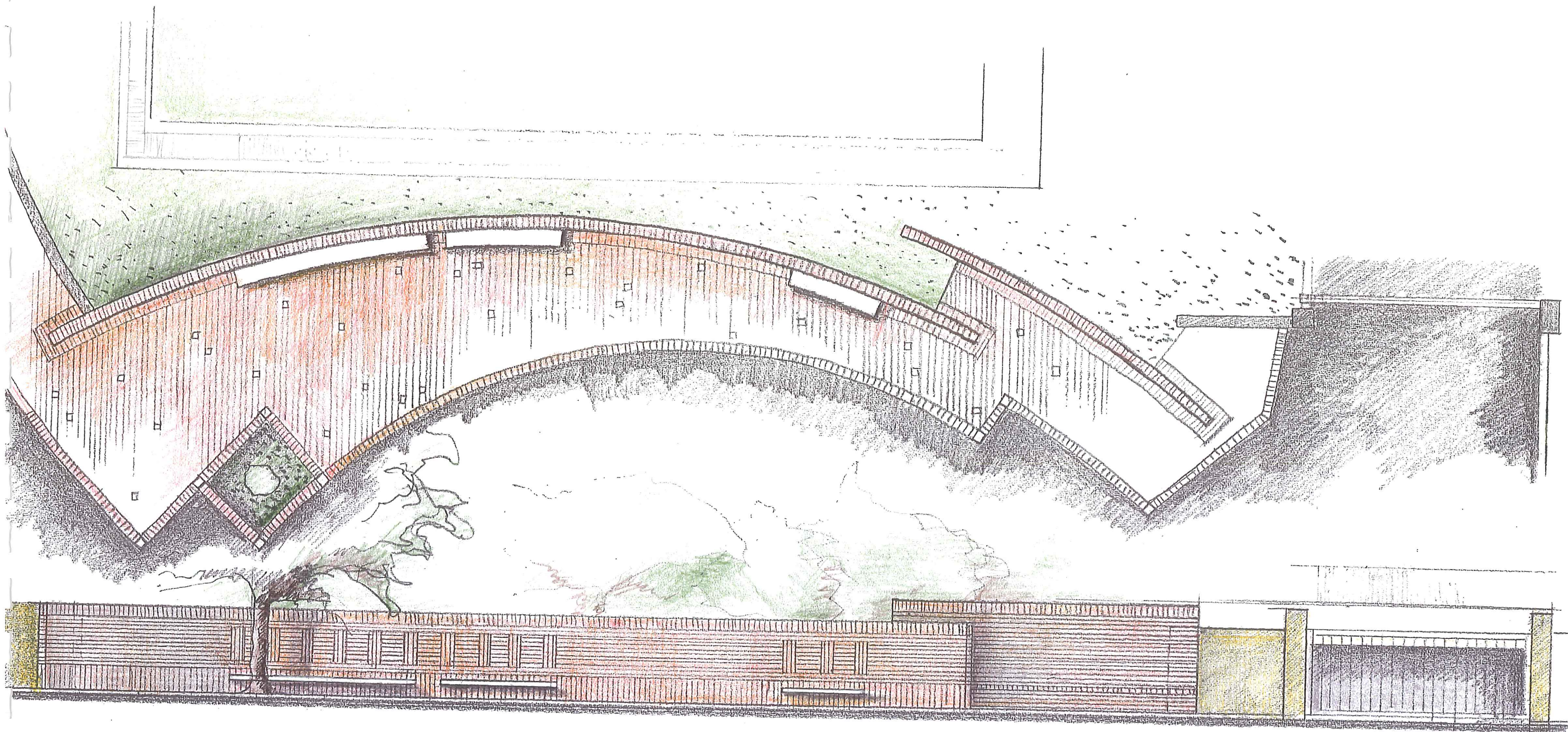
area da cedere per via aurelia

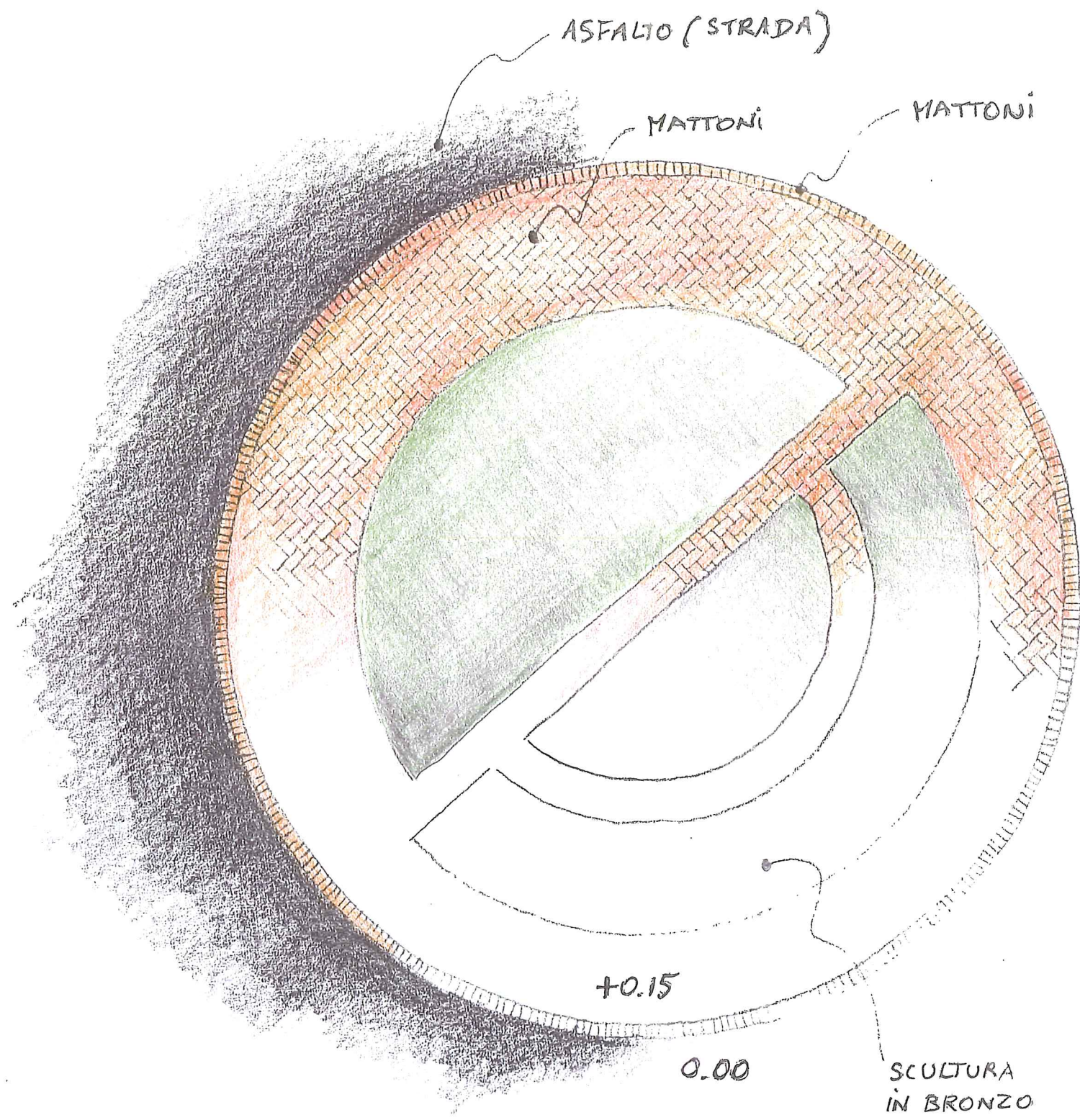
Zona Nord

lotto confine



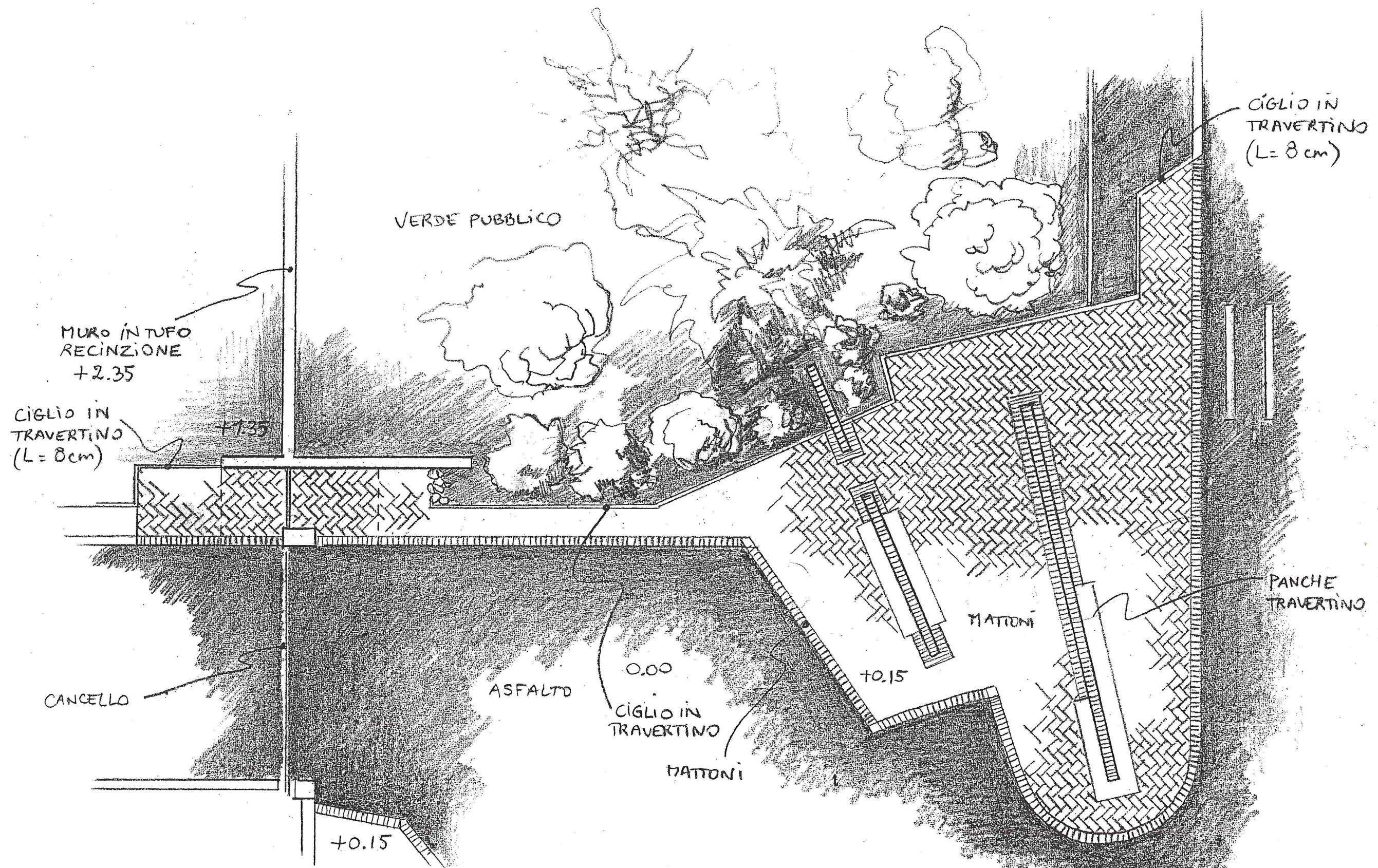
PIANTA 1 E PROSPETTO A  
 SC 1:100





PIANTA 2

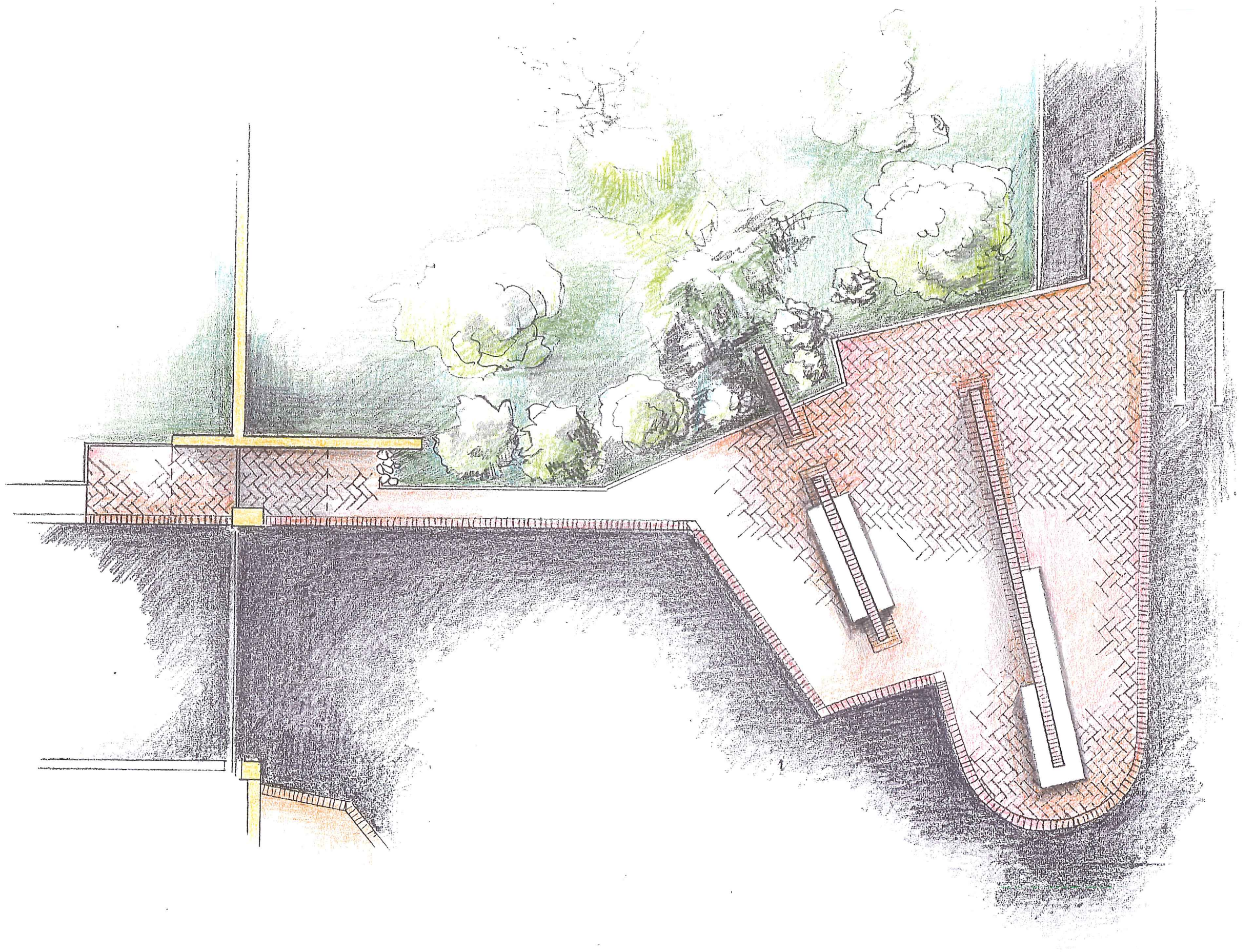
SC 1:100

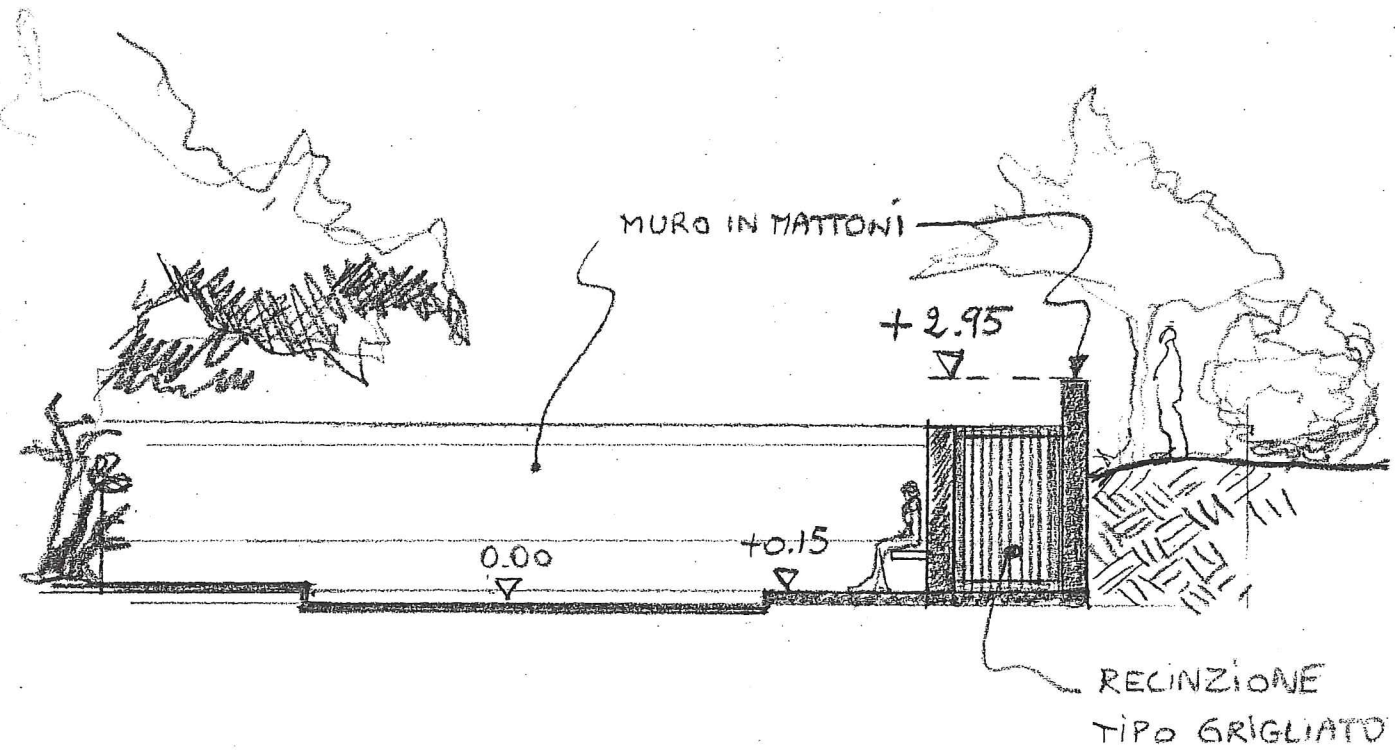


PIANTA 3

SC 1:100

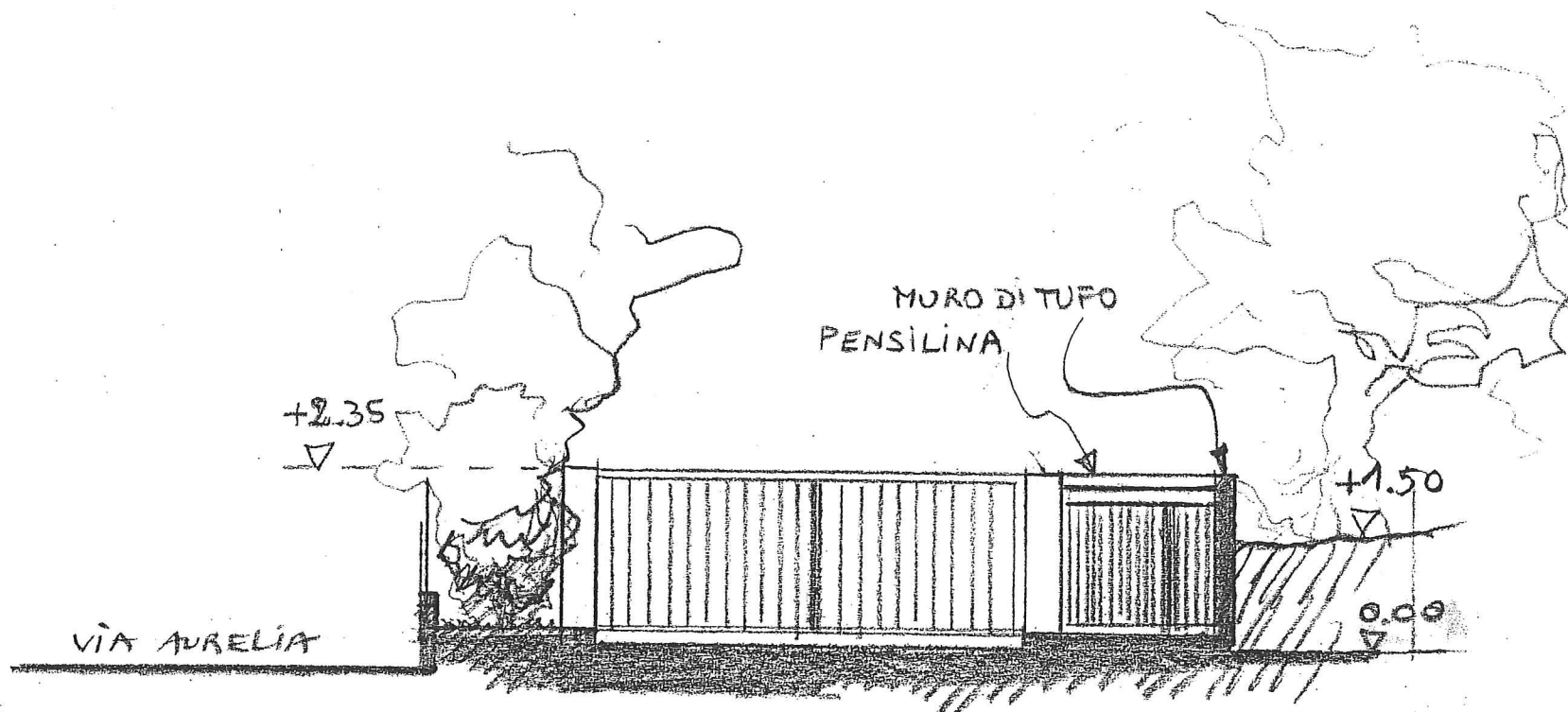






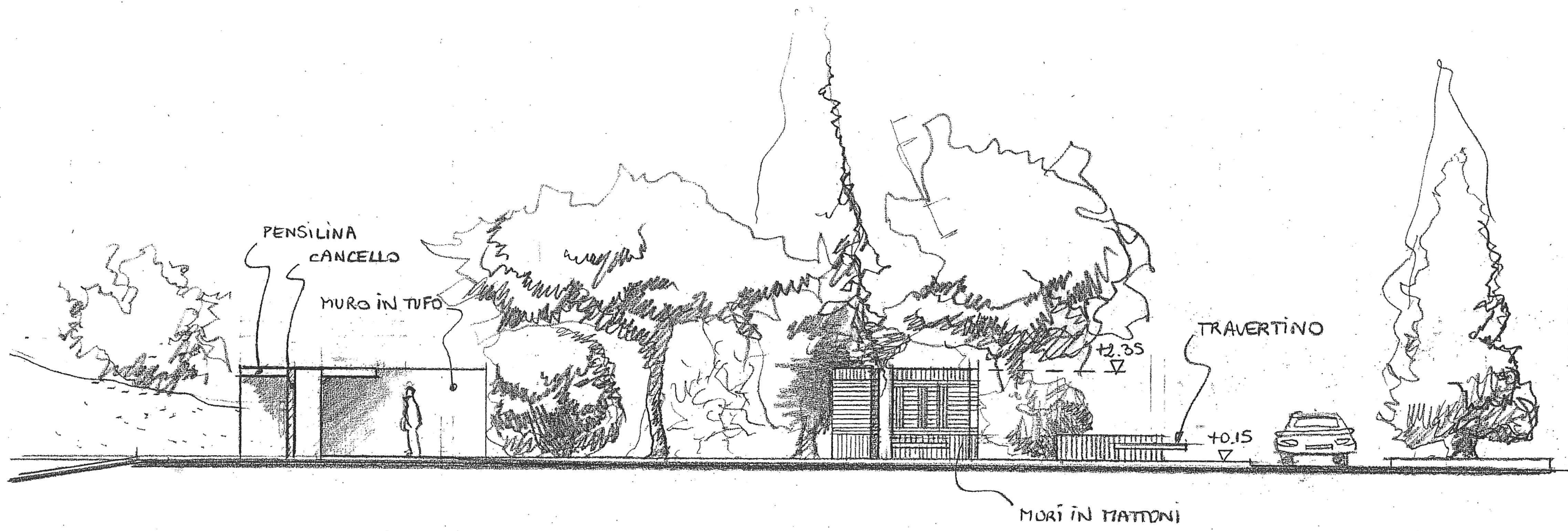
PROSPETTO B

SC 1:100



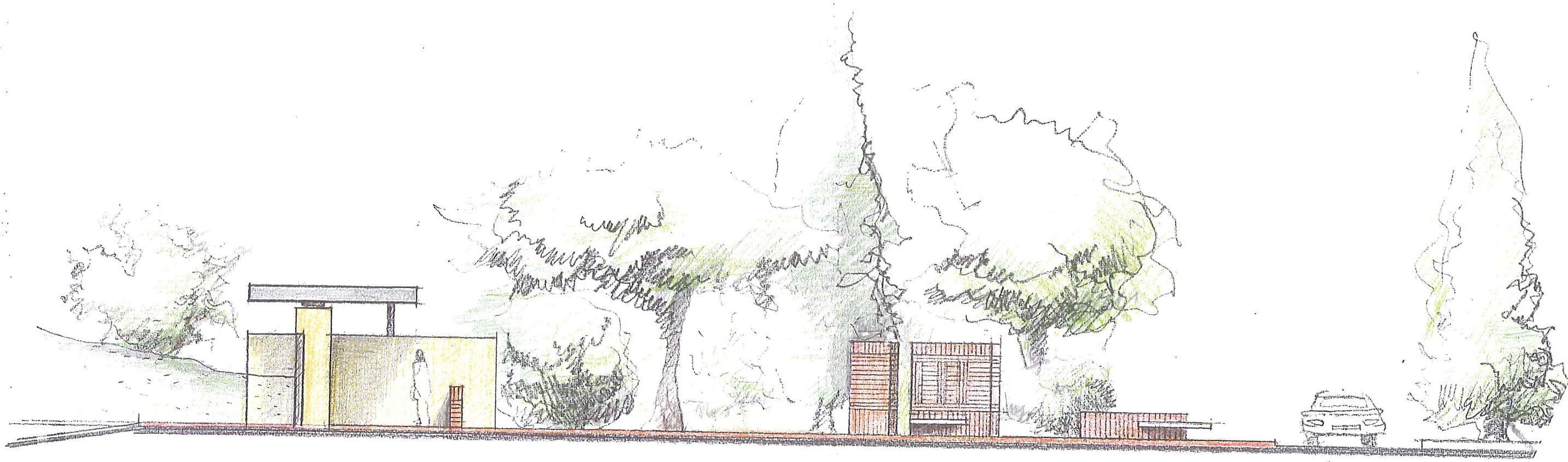
PROSPETTO C

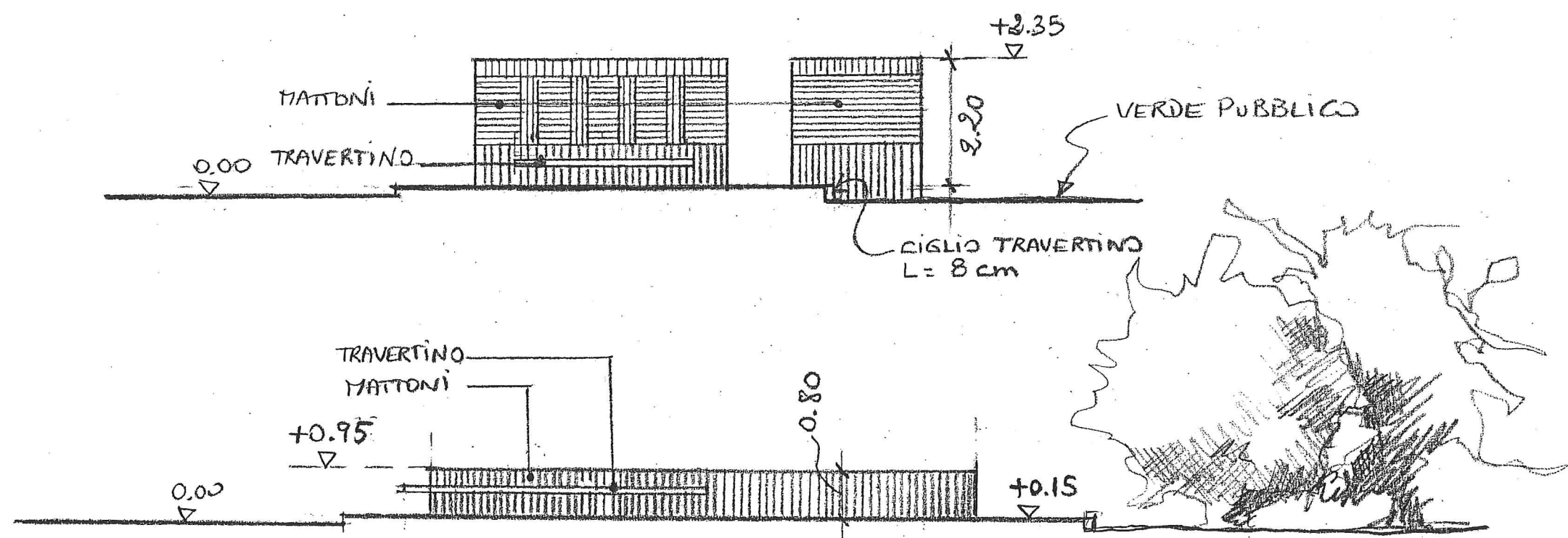
SC 1:100



PROSPETTO D

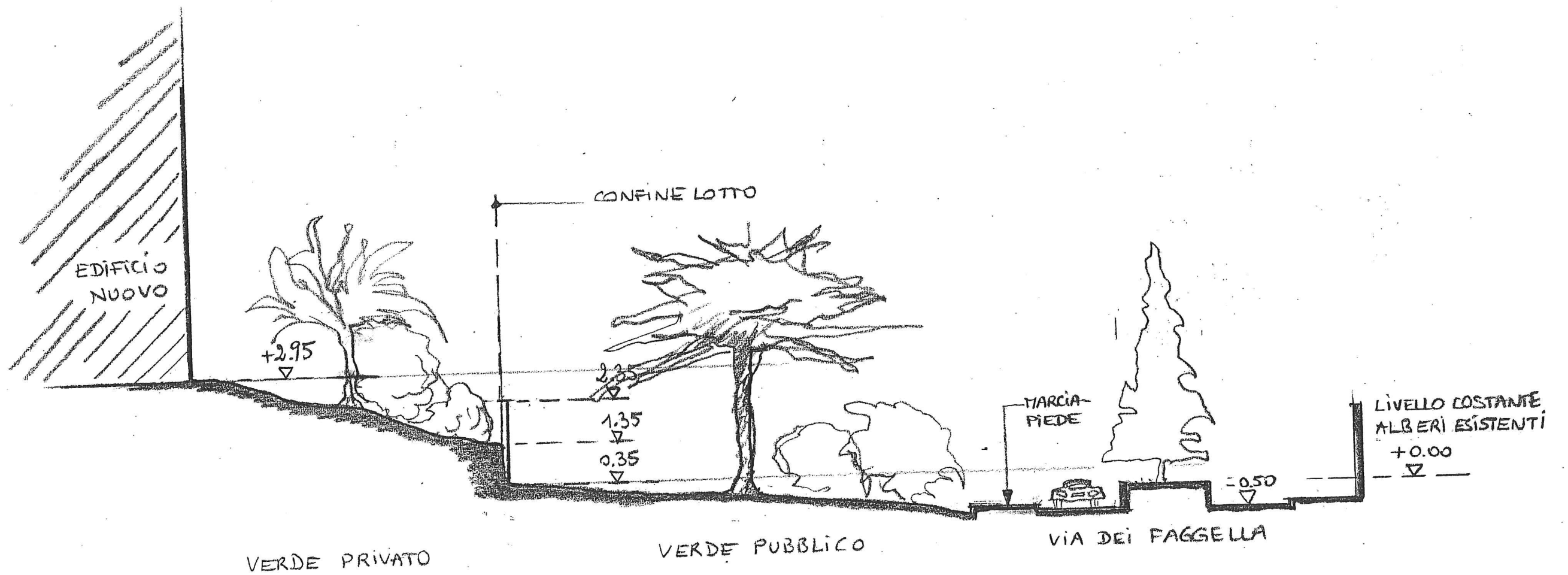
Sc 1:100





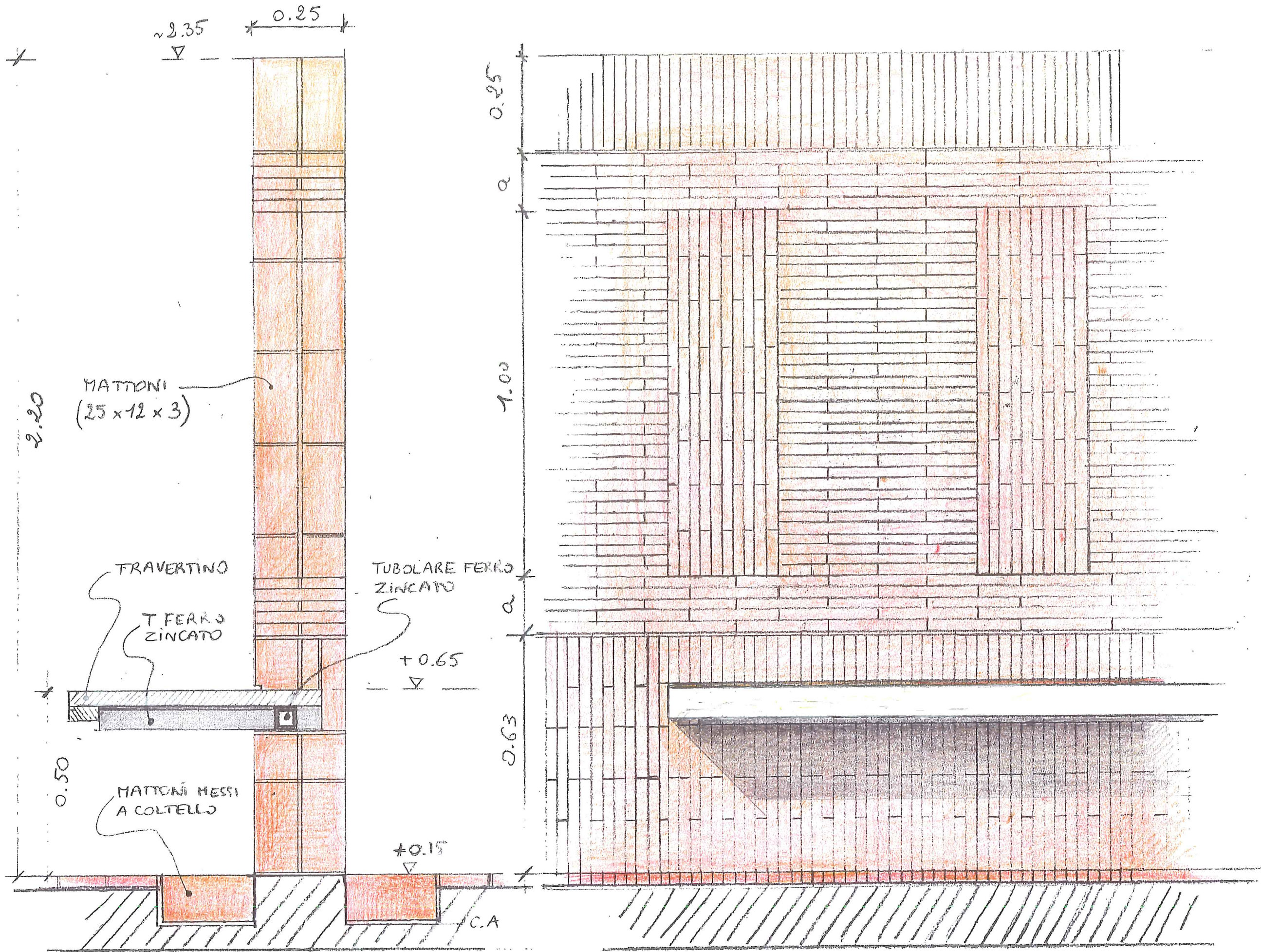
PROSPETTO E

SC: 1:100

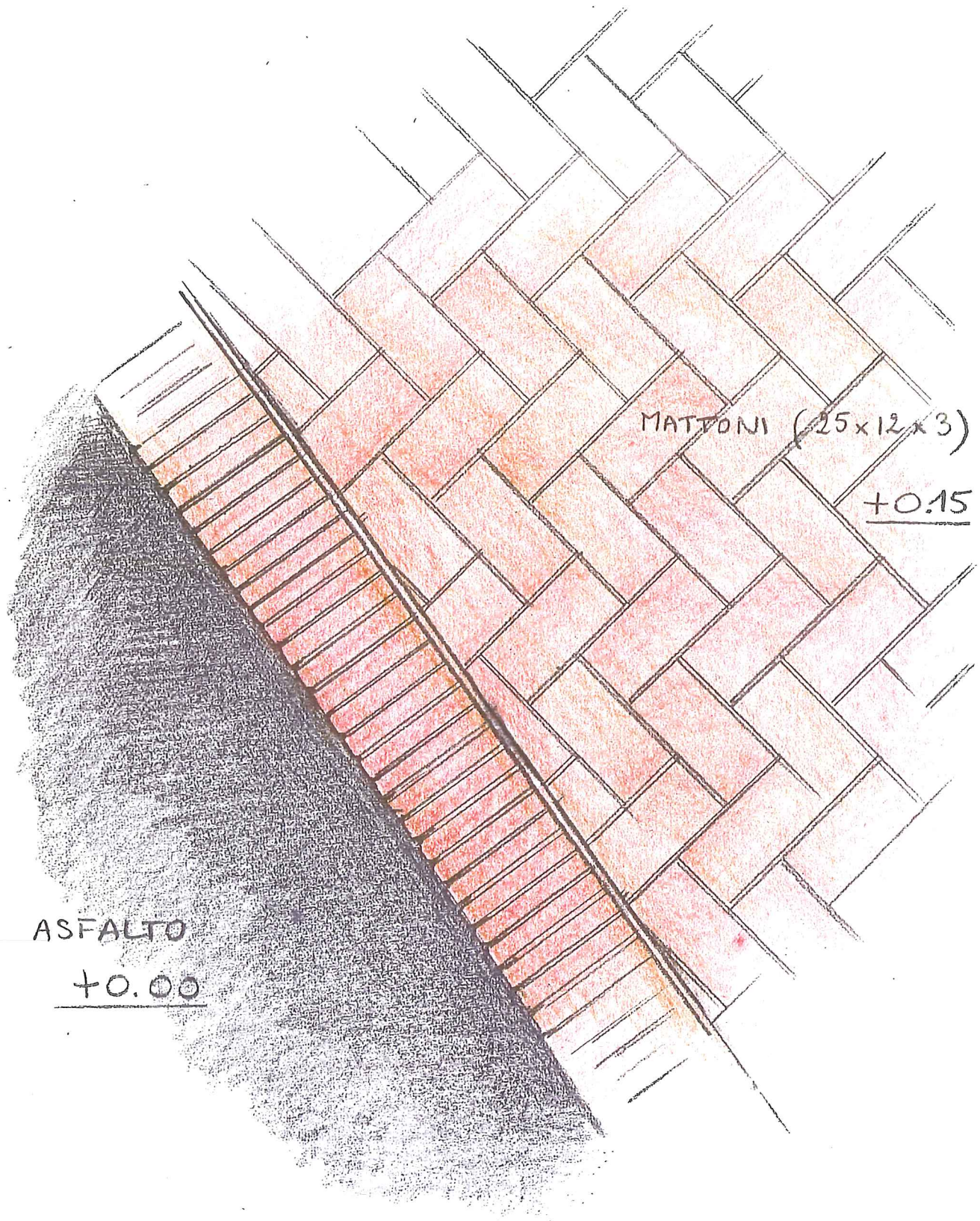


SEZIONE

SC: 1:100

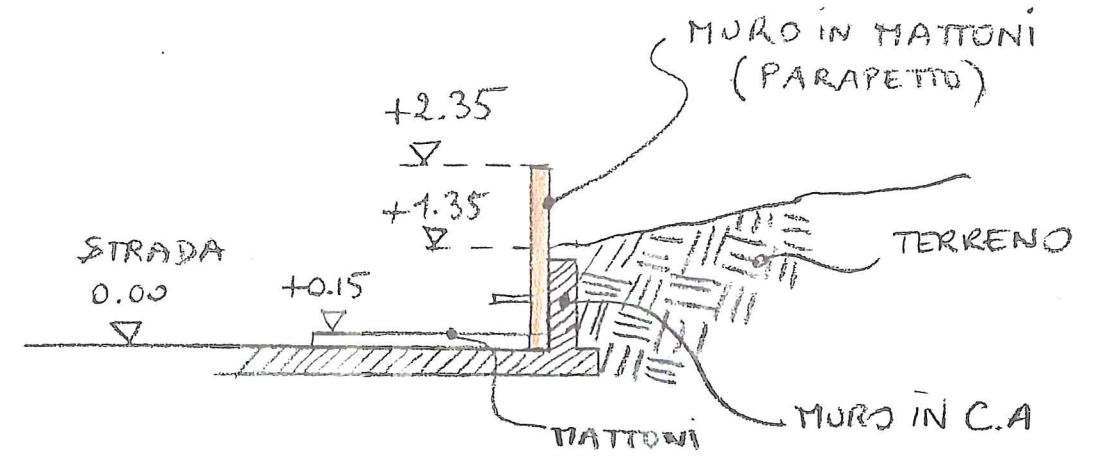


PARTICOLARE 1 SC 1:10

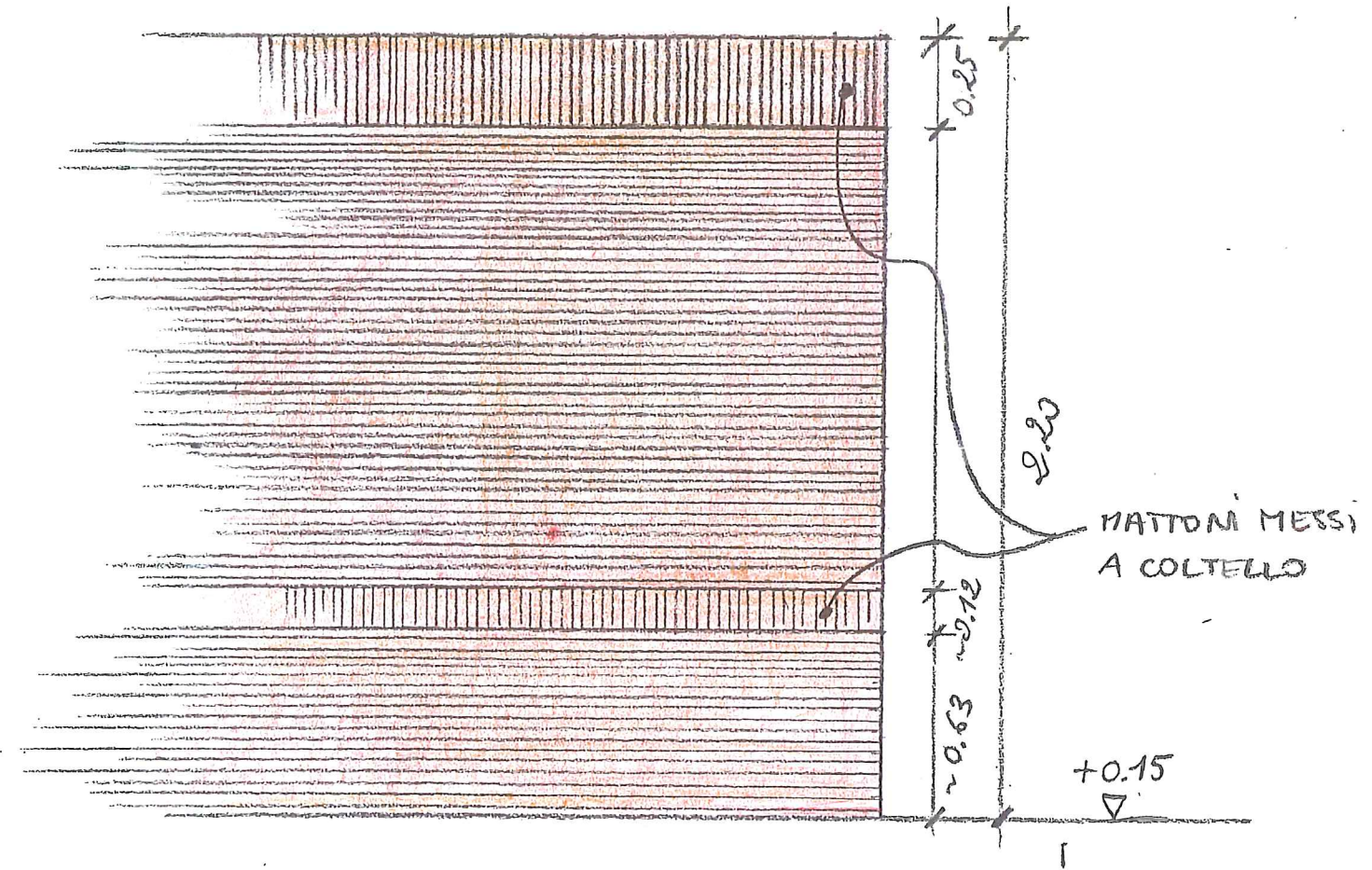


PARTICOLARE 3

Sc. 1:10



PARTICOLARE 2 Sc. 1:100



PARTICOLARE 1 bis Sc. 1:20



