



R A P P R E S E N T A Z I O N E G R A F I C A M A N U A L E



elisabeth schatz ■

■ *Progettare l'ambiente che ci circonda deve essere **una strada fatta insieme**, tra chi progetta, propone, suggerisce, e chi **sogna**, cerca, e vivrà quello spazio. Ognuno ha un **vissuto**, riferimenti, gusti, percezioni, e **desideri** unici...*

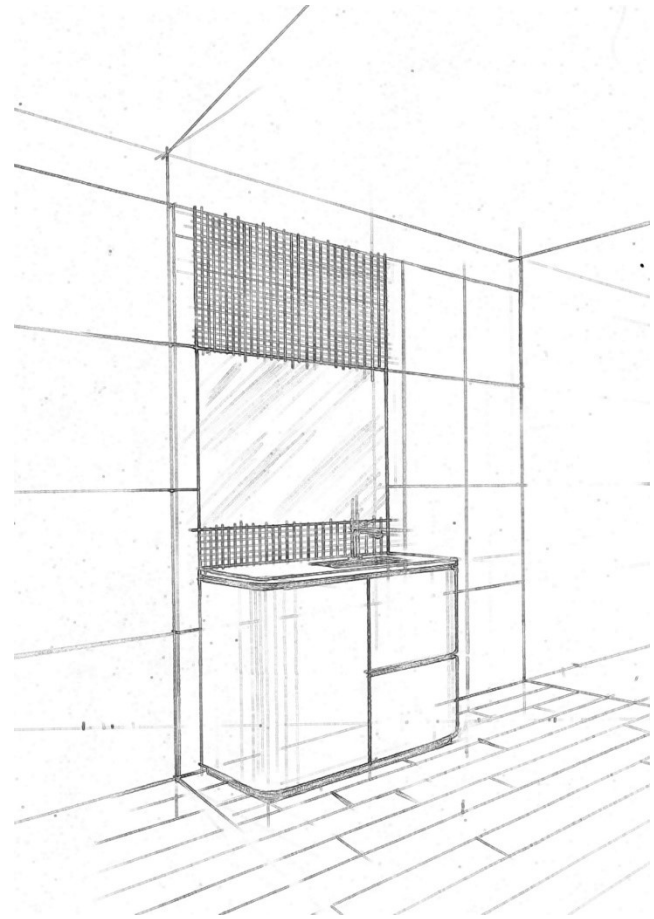
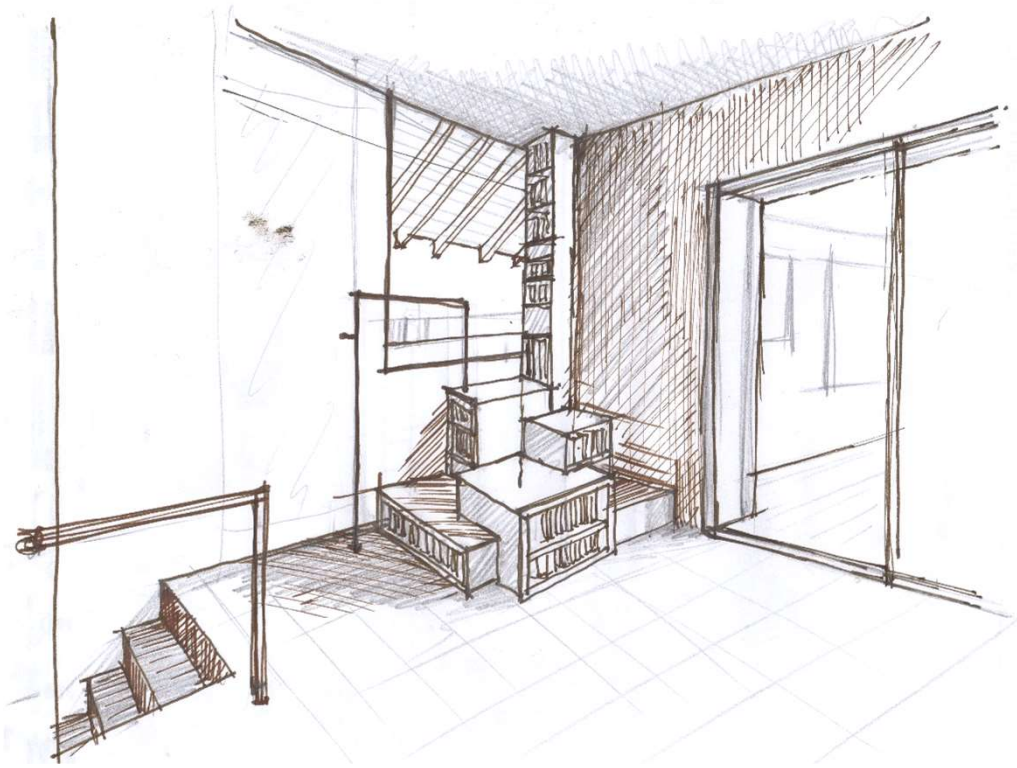
*L'elaborazione grafica manuale di un progetto permette **l'appropriazione degli spazi**, da chi riflette, proietta, **immagina e sogna**...*

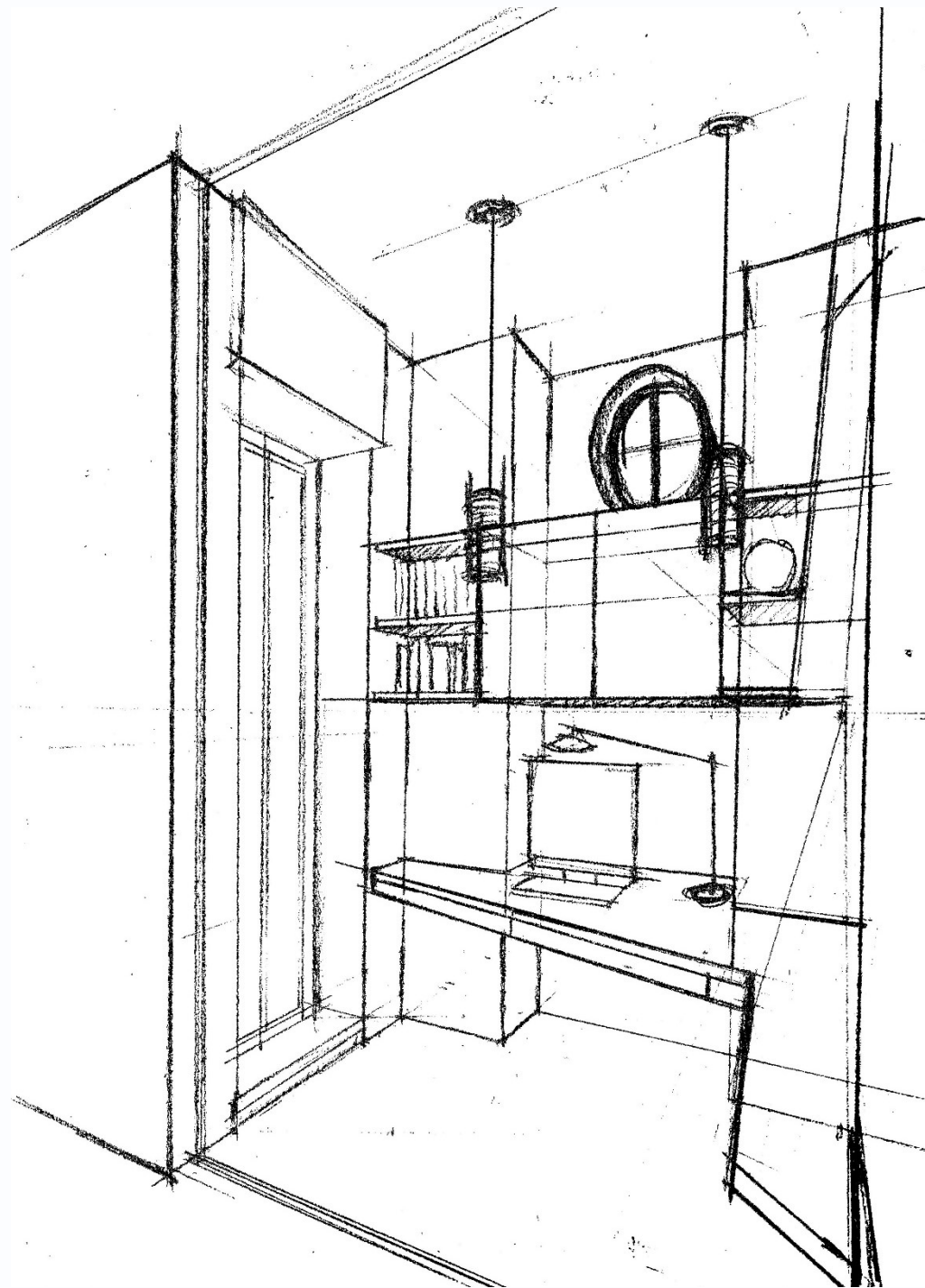
La realizzazione ideale di quegli spazi e dei suoi componenti si raggiungerà progressivamente con la piena simbiosi e complementarità insieme al progettista.

*Il disegno incompiuto, evocativo, **che dice ma non dice**, lascia campo a questa gestazione, e **sviluppa l'immaginario** che permette, a volte meglio delle asettiche rappresentazioni computerizzate e commerciali, di definire in modo **personale** la progettazione ■*



elisabeth schatz

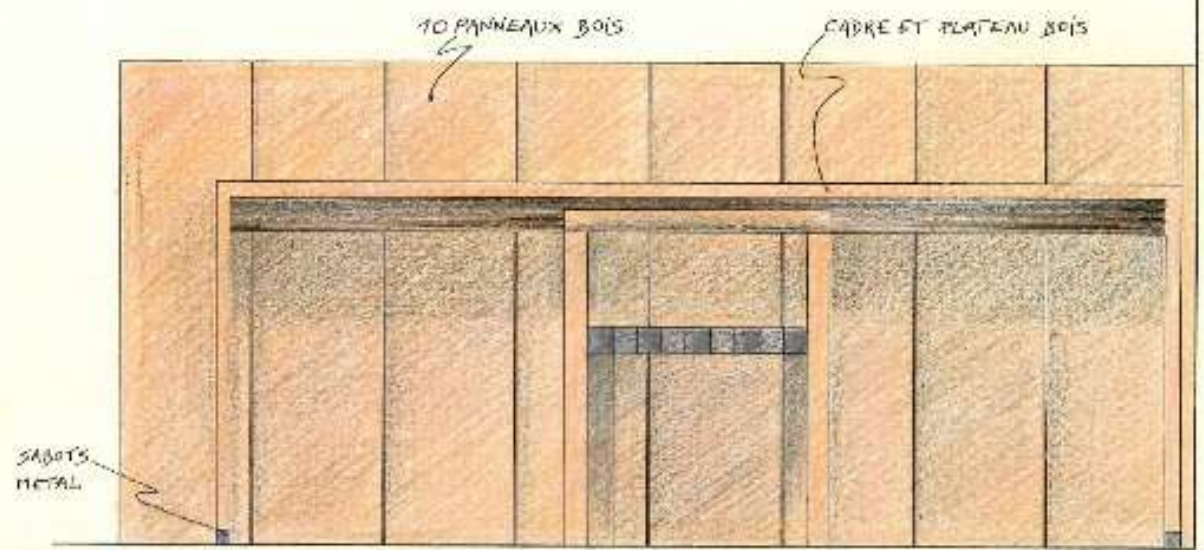




elisabeth schatz

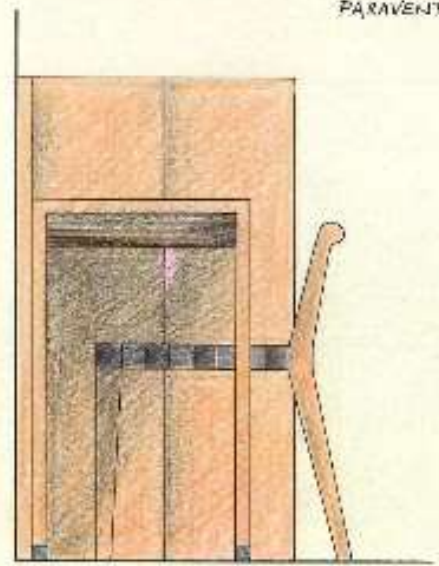


elisabeth schatz

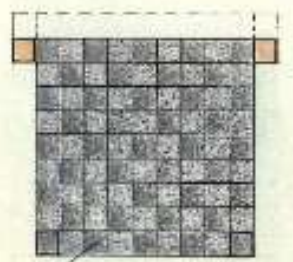


PARAVENT MURAL ET BUREAU : ELEVATION

ECH : 1/10

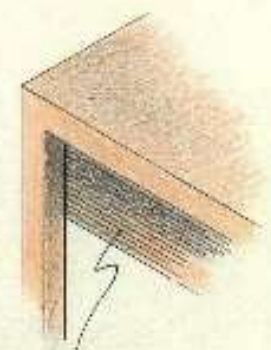


PROFIL



ASSISE EN SHINGLES

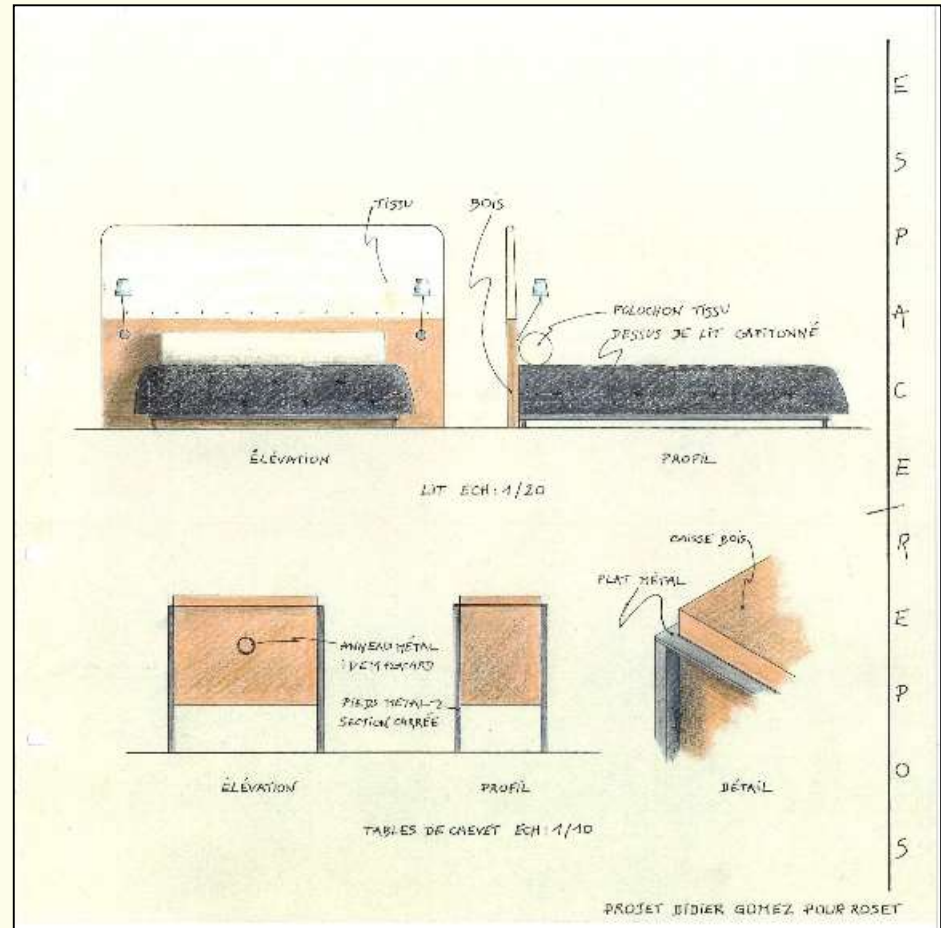
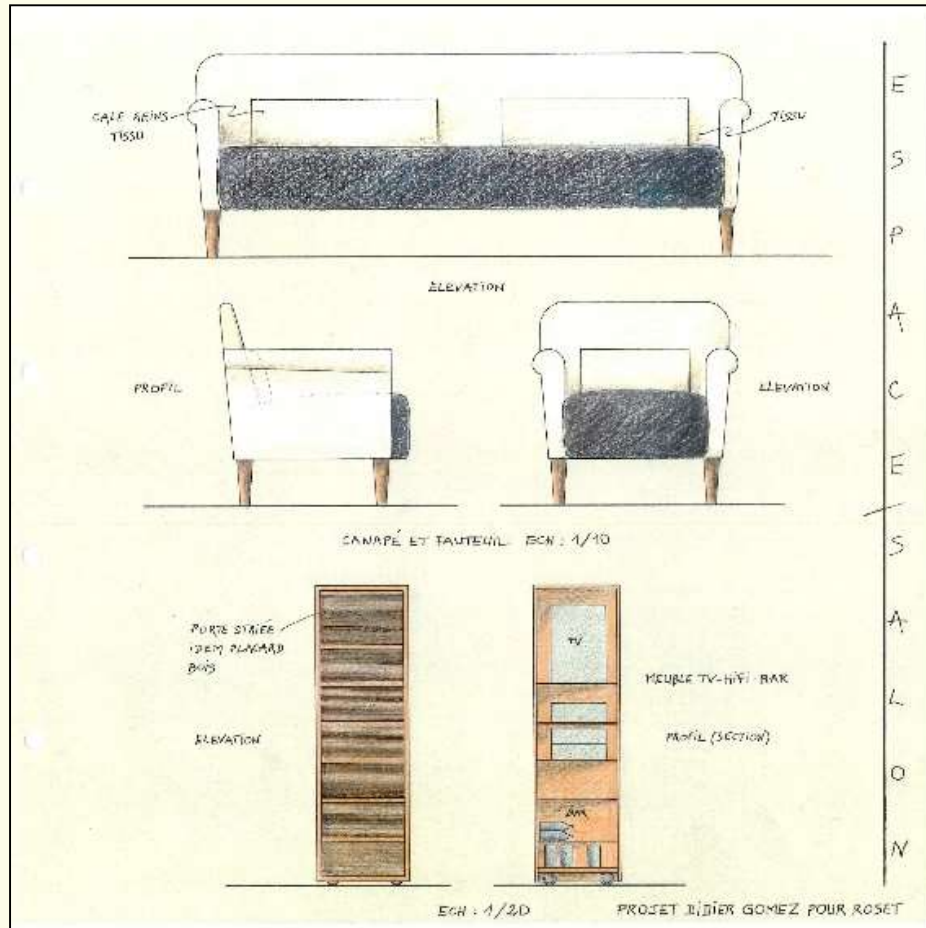
PLAN CHAISE

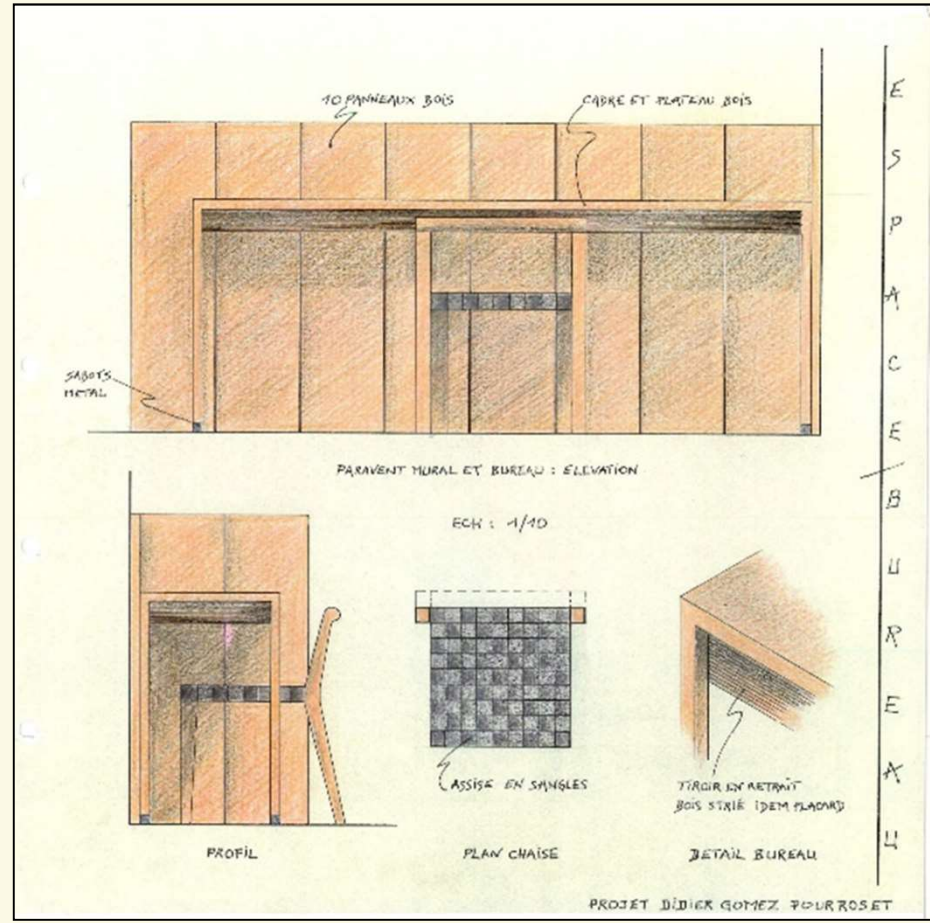
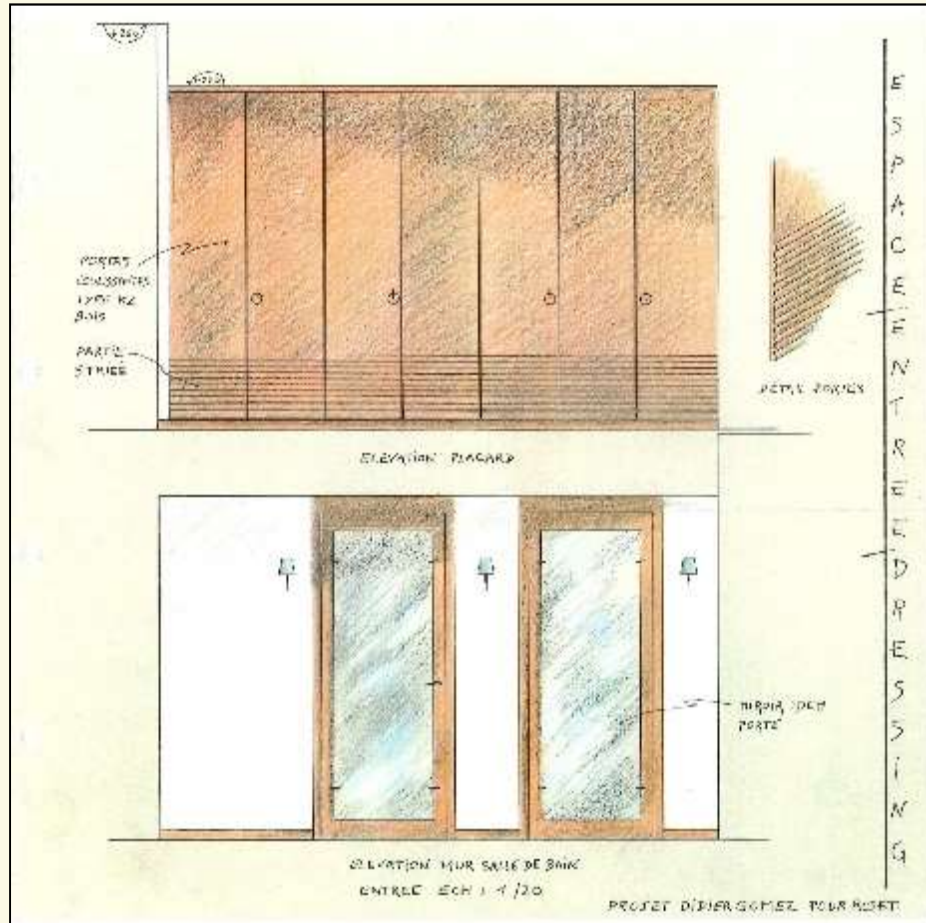


TIROIR EN RETRAIT
BOIS STRIE (DEM PLACARD)

DETAIL BUREAU

E
S
P
A
C
E
B
U
R
E
A
U







elisabeth schatz

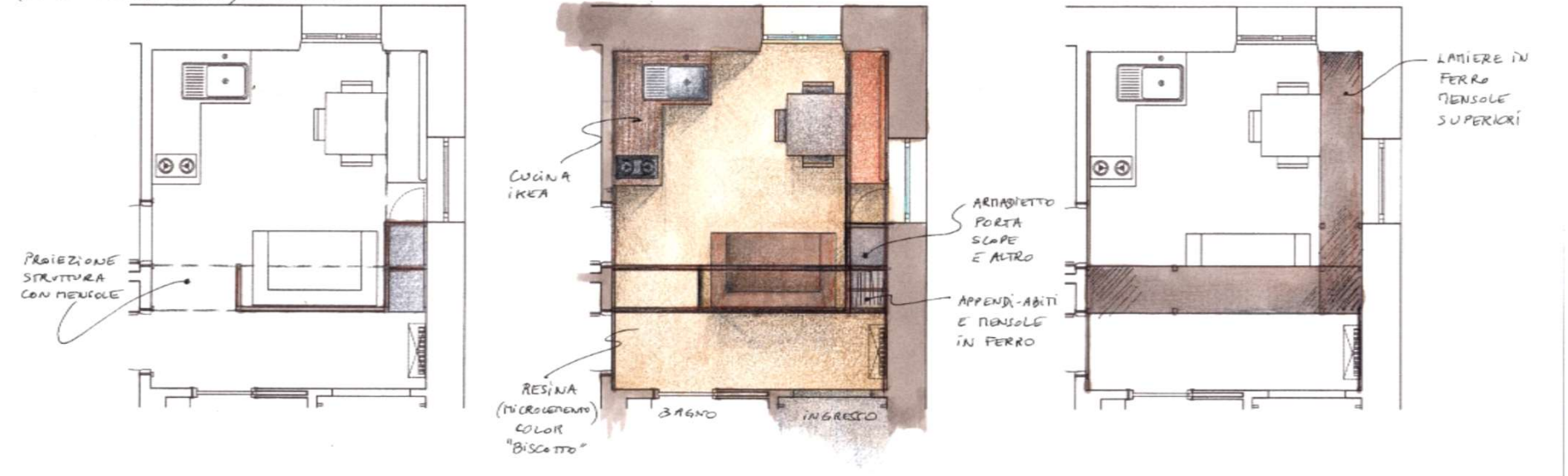
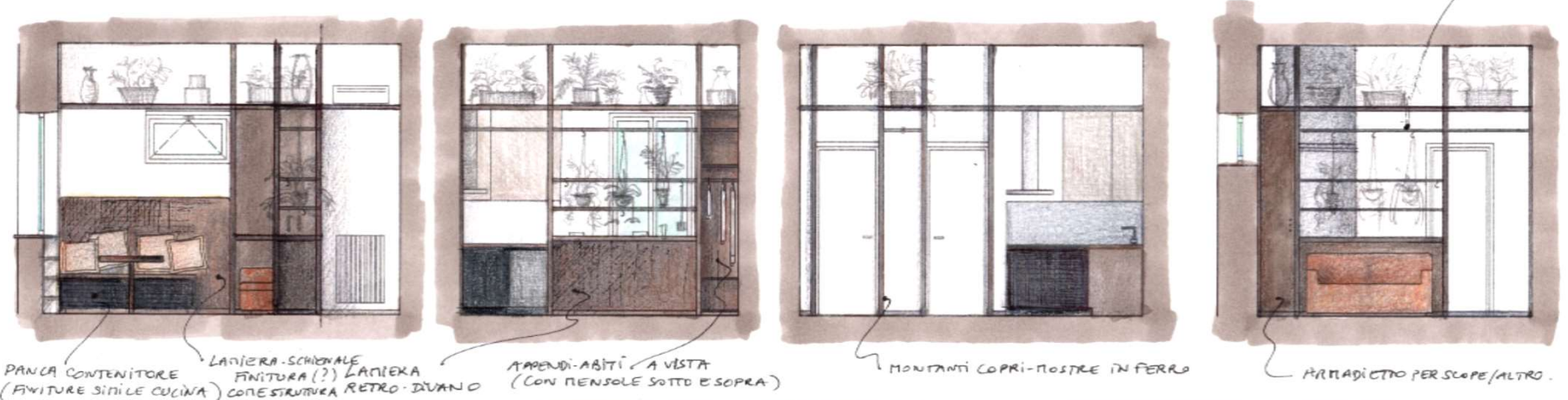


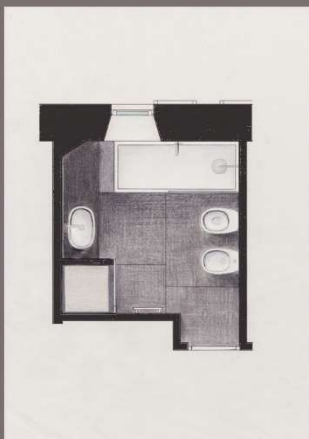


PIANTA
1:50

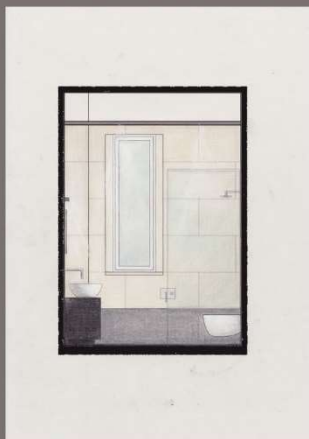
elisabeth schatz

'SEPARATORE VISIVO'
PROFILI PORTA
OGGETTI / PIANTE





PIANTA



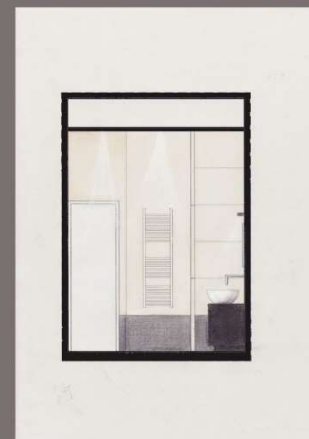
PROSPETTO FINESTRA



PROSPETTO LAVABO

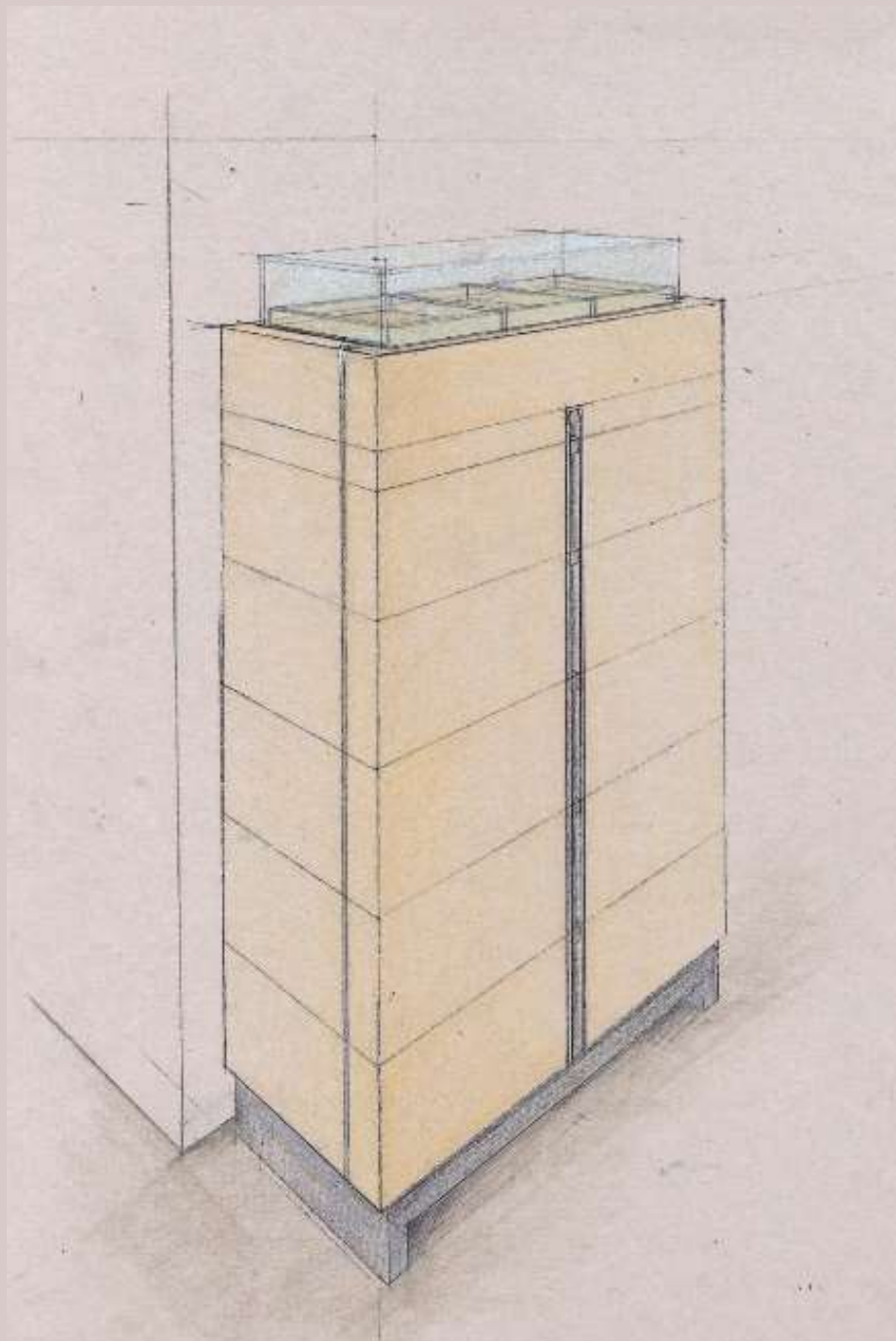


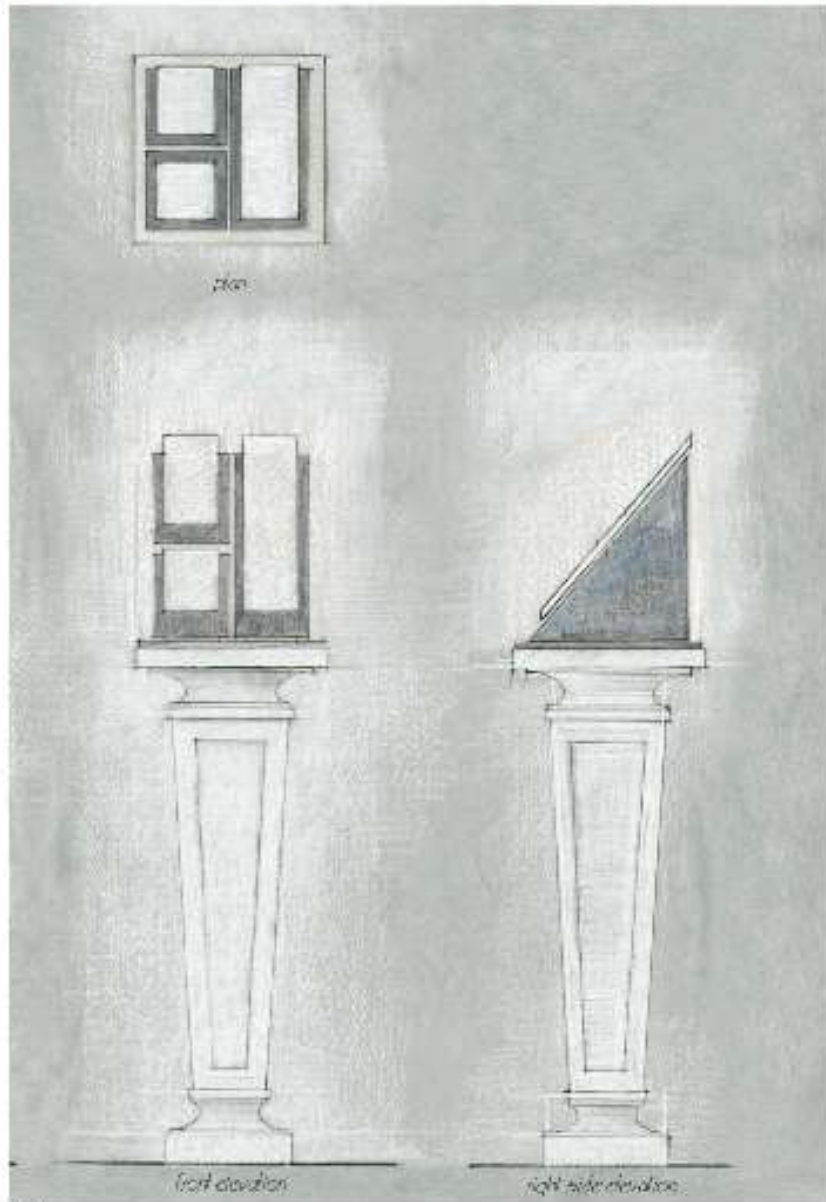
PROSPETTO SANITARI



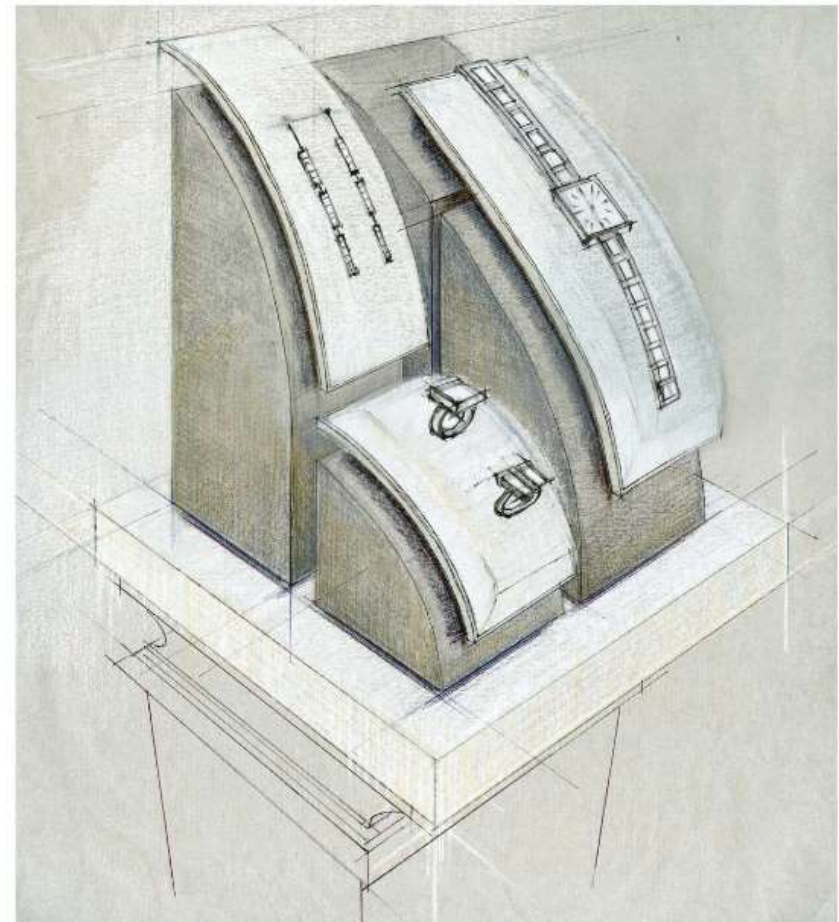
PROSPETTO INGRESSO

CASA SIVIGLIA - BAGNO CON VASCA
ELISABETH SCHATZ INTERIOR DESIGNER - CORRIDO TRISTE 14E - ROMA

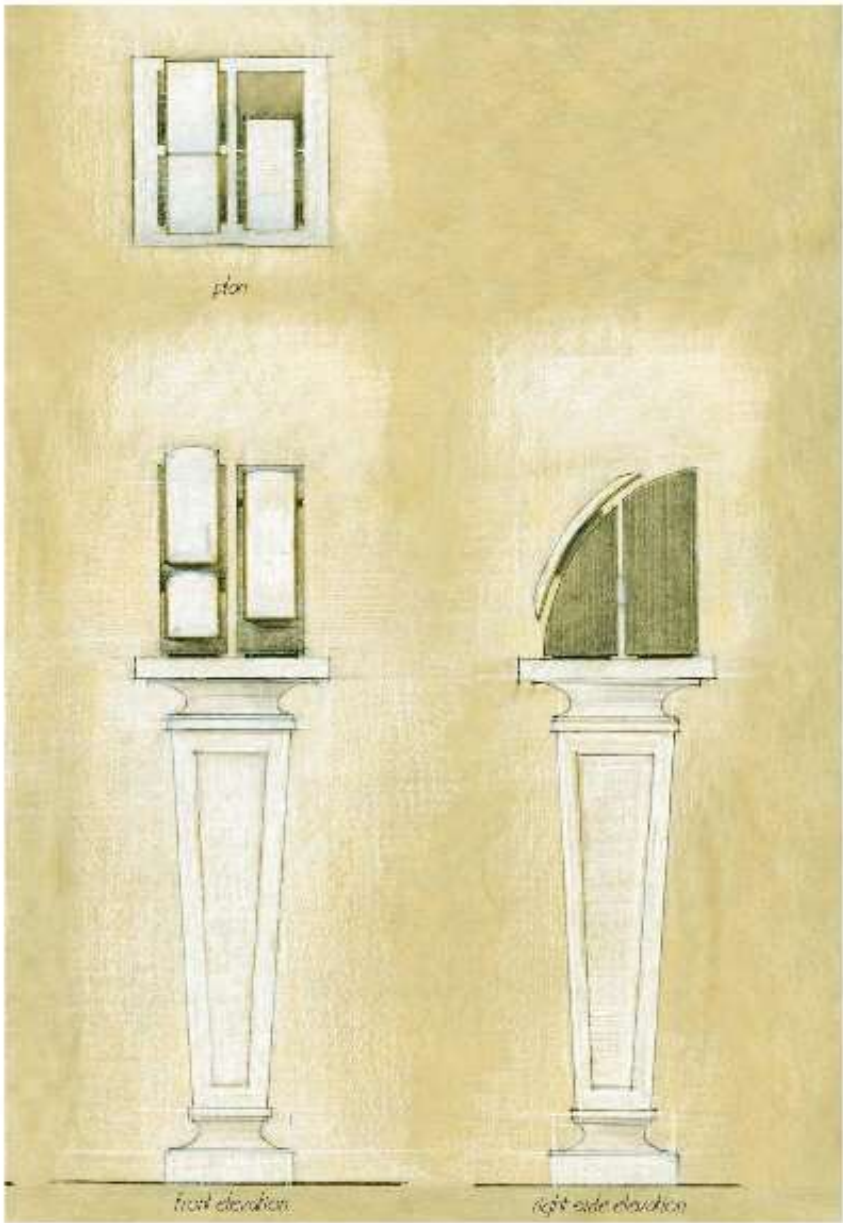




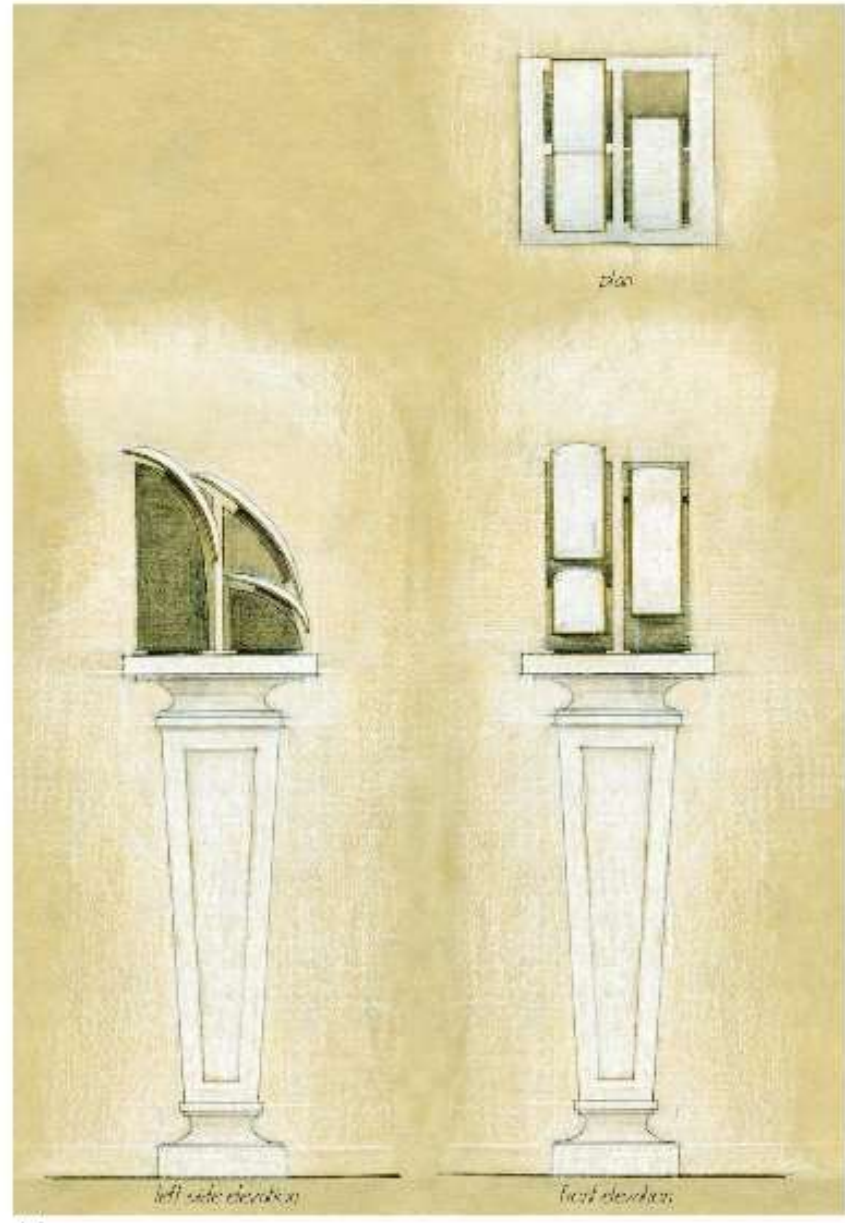
Jahan Displays for podiums STUDIO i.c. & a. - via Reno 22a - 00196 Roma (Italy) tel. 0685350276



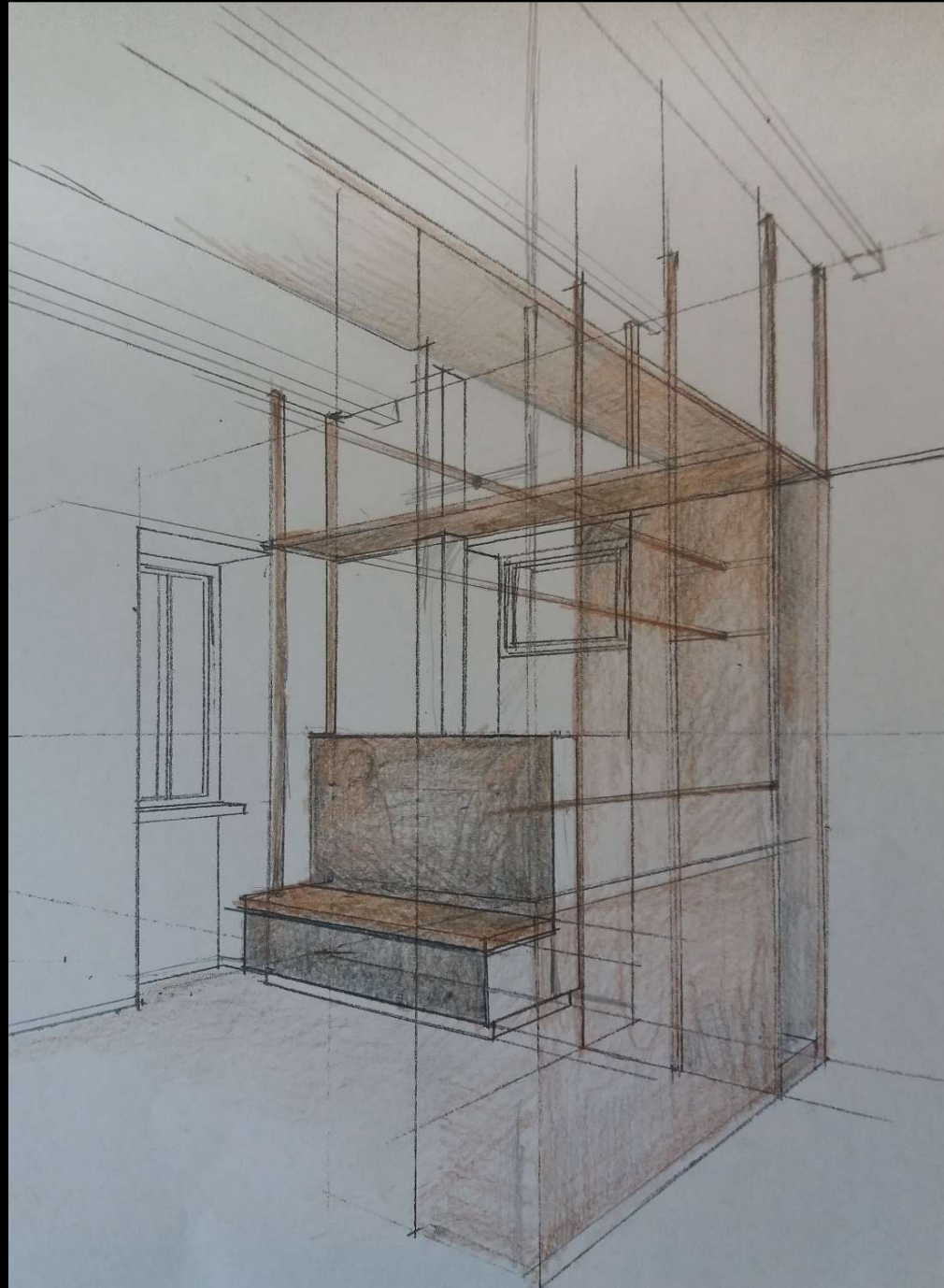
Jahan Displays for podiums STUDIO i.c. & a. - via Reno 22a - 00196 Roma (Italy) tel. 0685350276



Jahan Displays for podiums STUDIO 1.1.63 - Via Reno 22a - 30100 Pove del Grappa - Tel. 0423/360075



Jahan Displays for podiums STUDIO 1.1.64 - Via Reno 22a - 30100 Pove del Grappa - Tel. 0423/360075



elisabeth schatz



Studio i.d.&a - Roma

Gioielleria Mossa Lecce

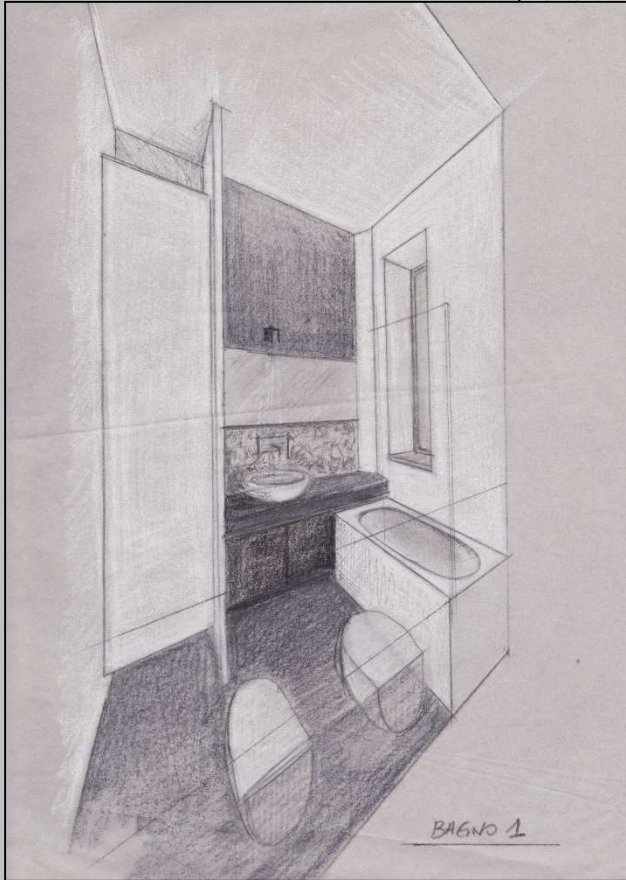
elisabeth schatz

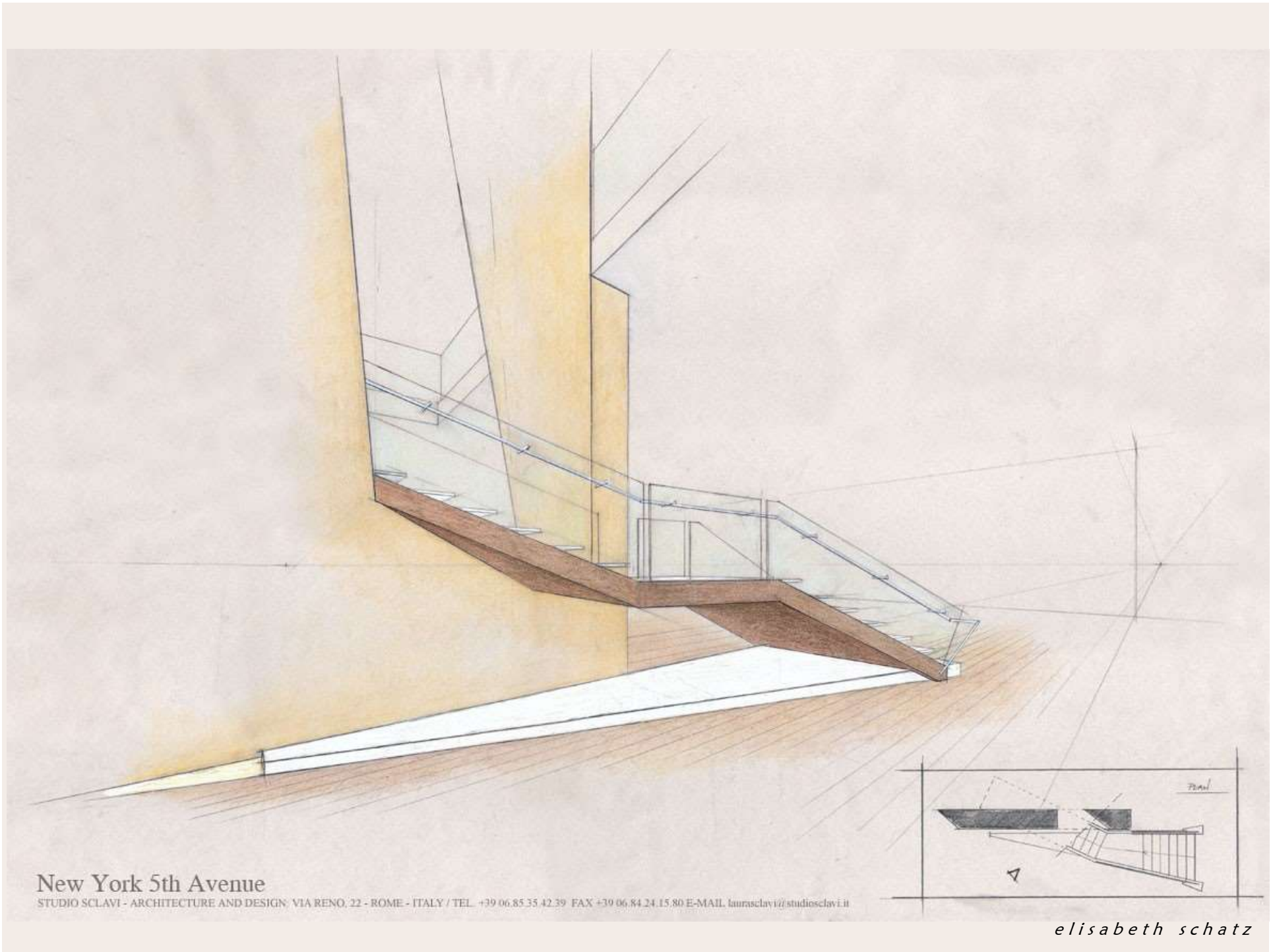


elisabeth schatz



elisabeth schatz





New York 5th Avenue

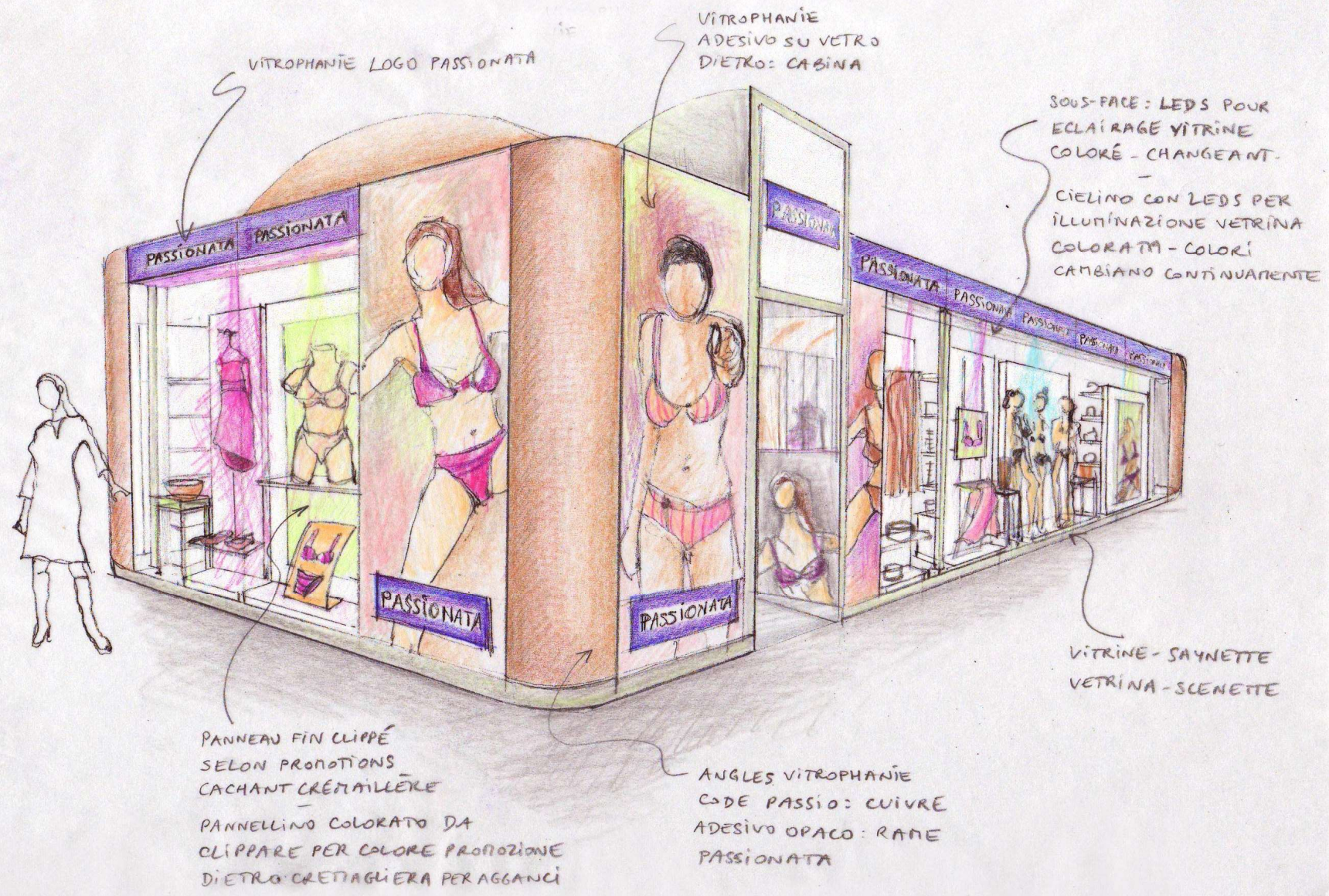
STUDIO SCLAVI - ARCHITECTURE AND DESIGN, VIA RENO, 22 - ROME - ITALY / TEL. +39 06 85 35 42 39 FAX +39 06 84 24 15 80 E-MAIL luarasclavi@studiosclavi.it

elisabeth schatz



elisabeth schatz





VITROPHANIE LOGO PASSIONATA

VITROPHANIE
ADESIVO SU VETRO
DIETRO: CABINA

SOUS-FACE: LEDS POUR
ECLAIRAGE VITRINE
COLORE - CHANGEANT.
-
CIELINO CON LEDS PER
ILLUMINAZIONE VETRINA
COLORATA - COLORI
CAMBIANO CONTINUAMENTE

PANNEAU FIN CLIPPÉ
SELON PROMOTIONS
CACHANT CRÉMAILLÈRE
-
PANNELLO COLORATO DA
CLIPPARE PER COLORE PROMOZIONE
DIETRO CRETAGLIERA PER AGGANCI

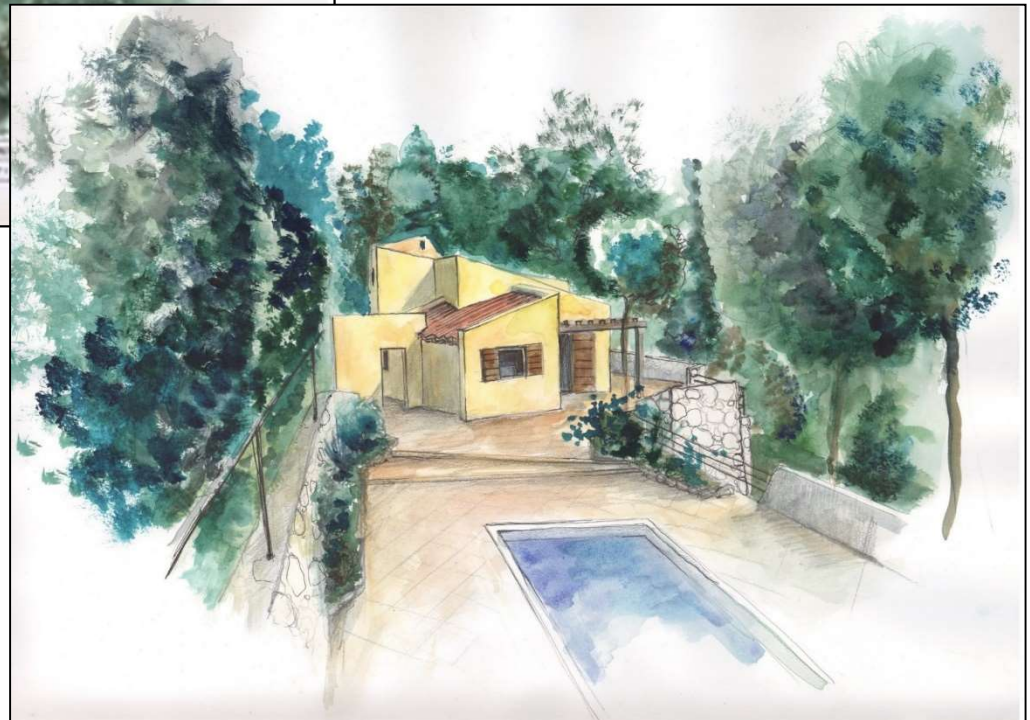
ANGLES VITROPHANIE
CODE PASSIO: CUIVRE
ADESIVO OPACO: RAME
PASSIONATA

VITRINE - SAYNETTE
VETRINA - SCENETTE

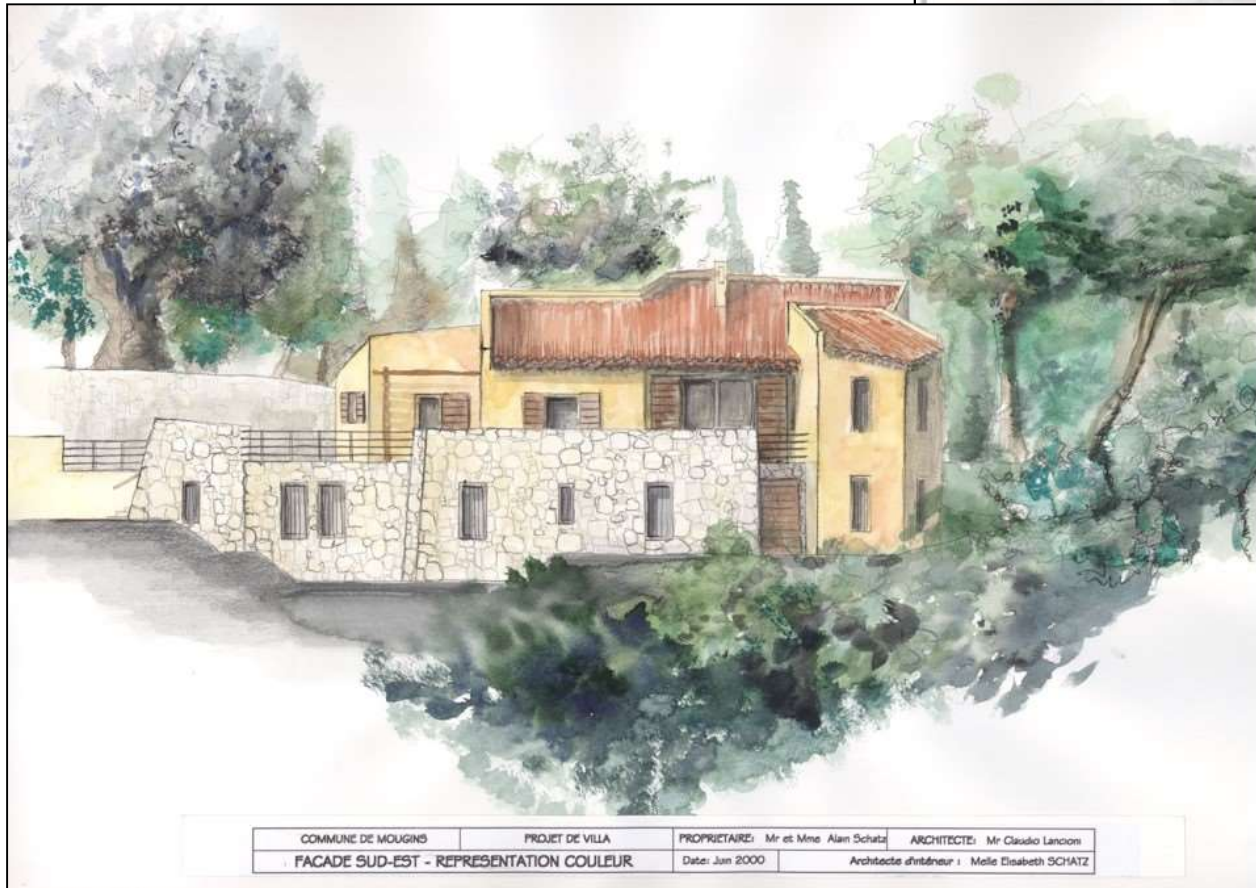


elisabeth schatz

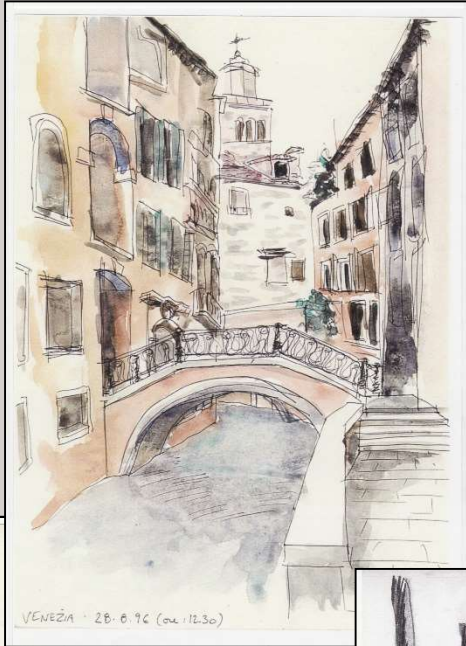




elisabeth schatz



Viaggio in Italia 1996



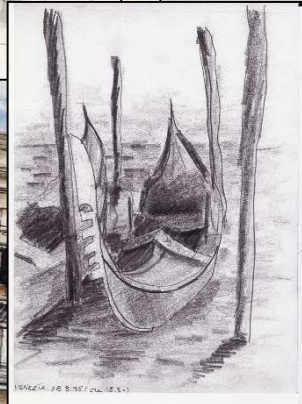
VENEZIA - 28.6.96 (ca. 12.30)



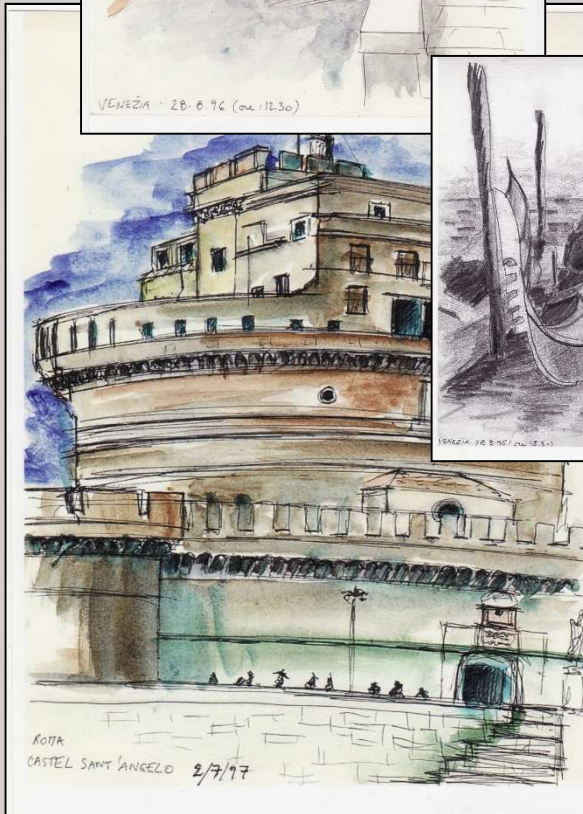
Bologna - Piazza del Popolo



Bologna - Piazza del Popolo



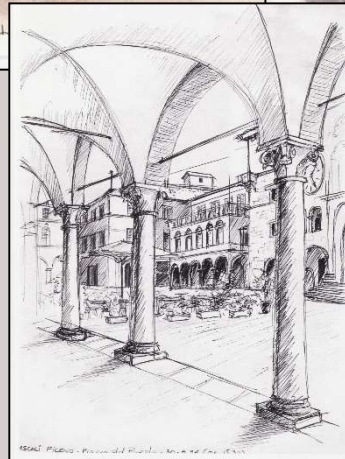
VENEZIA - 28.6.96 (ca. 12.30)



ROTTA
CASTEL SANT'ANGELO 2/7/97



VERONA - Piazza del Popolo



VERONA - Piazza del Popolo



TORINO - CORSO FUORTE - BANCA POPOLARE DI LEDI - 23.8.96 (ca. 22)